

# FITC Rabbit anti-Human CD2 mAb

Catalog No.: A26830

## Basic Information

### Observed MW

Refer to figures

### Calculated MW

39kDa

### Category

Primary antibody

### Applications

FC

### Cross-Reactivity

Human

### CloneNo number

ARC59333

### Conjugate

FITC. Ex:491nm. Em:516nm.

## Recommended Dilutions

**FC** 5  $\mu$ l per  $10^6$  cells in  
100  $\mu$ l volume

## Background

The protein encoded by this gene is a surface antigen found on all peripheral blood T-cells. The encoded protein interacts with LFA3 (CD58) on antigen presenting cells to optimize immune recognition. A locus control region (LCR) has been found in the 3' flanking sequence of this gene.

## Immunogen Information

### Gene ID

914

### Swiss Prot

P06729


### Immunogen

Recombinant protein (or fragment). This information is considered to be commercially sensitive.

### Synonyms

T11; SRBC; LFA-2

## Contact

 | 400-999-6126

 | [cn.market@abclonal.com.cn](mailto:cn.market@abclonal.com.cn)

 | [www.abclonal.com.cn](http://www.abclonal.com.cn)

## Product Information

### Source

Rabbit

### Isotype

IgG

### Purification

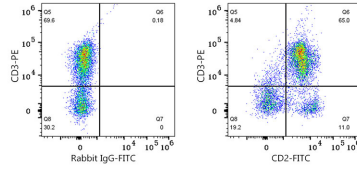
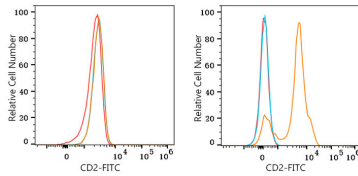
Affinity purification

### Storage

Store at 2-8°C. Avoid freeze.

Buffer: PBS with 0.09% Sodium azide, 0.2% BSA, pH7.3.

## Validation Data



Flow cytometry: 1X10<sup>6</sup> K-562 cells (negative control, left) and Human PBMC (right) were surface-stained with FITC Rabbit anti-Human CD2 mAb (A26830, 5 µl/Test, orange line) or FITC Rabbit IgG isotype control (A25616, 5 µl/Test, blue line). Non-fluorescently stained cells were used as blank control (red line).

Flow cytometry: 1X10<sup>6</sup> Human PBMC were surface-stained with PE Mouse anti-Human CD3 mAb (A25083, 5 µl/Test) and FITC Rabbit IgG isotype control (A25616, 5 µl/Test, left) or FITC Rabbit anti-Human CD2 mAb (A26830, 5 µl/Test, right).