

CCL25 Rabbit pAb

Catalog No.: A2685

2 Publications

Basic Information

Observed MW

20KDa

Calculated MW

17kDa

Category

Primary antibody

Applications

WB, ELISA

Cross-Reactivity

Human

Background

This antimicrobial gene belongs to the subfamily of small cytokine CC genes. Cytokines are a family of secreted proteins involved in immunoregulatory and inflammatory processes. The CC cytokines are proteins characterized by two adjacent cysteines. The cytokine encoded by this gene displays chemotactic activity for dendritic cells, thymocytes, and activated macrophages but is inactive on peripheral blood lymphocytes and neutrophils. The product of this gene binds to chemokine receptor CCR9. Alternative splicing results in multiple transcript variants.

Recommended Dilutions

WB 1:1000 - 1:5000**ELISA** Recommended starting concentration is 1 µg/mL. Please optimize the concentration based on your specific assay requirements.

Immunogen Information

Gene ID

6370

Swiss Prot

O15444

Immunogen

Recombinant protein (or fragment). This information is considered to be commercially sensitive.

Synonyms

TECK; Ckb15; SCYA25; TECKvar; Ck beta-15; CCL25

Contact

 | 400-999-6126 | cn.market@abclonal.com.cn | www.abclonal.com.cn

Product Information

Source

Rabbit

Isotype

IgG

Purification

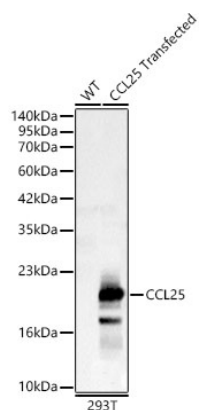
Affinity purification

Storage

Store at -20°C. Avoid freeze / thaw cycles.

Buffer: PBS containing 50% glycerol, preserved with proclin300 or sodium azide (as specified on the Certificate of Analysis), pH 7.3.

Validation Data



Western blot analysis of lysates from wild type (WT) and 293T cells transfected with CCL25, using CCL25 Rabbit pAb (A2685) at 1:1000 dilution.
Secondary antibody: HRP-conjugated Goat anti-Rabbit IgG (H+L) (AS014) at 1:10000 dilution.
Lysates/proteins: 25µg per lane.
Blocking buffer: 3% nonfat dry milk in TBST.
Detection: ECL Basic Kit (RM00020).
Exposure time: 0.5s.