

# ABflo® 488 Mouse anti-Human CD15/SSEA-1 mAb

Catalog No.: A26929

## Basic Information

### Observed MW

### Calculated MW

59kDa

### Category

Primary antibody

### Applications

FC

### Cross-Reactivity

Human

### CloneNo number

AMC0710

### Conjugate

ABflo® 488. Ex:491nm. Em:516nm.

## Background

The product of this gene transfers fucose to N-acetyllactosamine polysaccharides to generate fucosylated carbohydrate structures. It catalyzes the synthesis of the non-sialylated antigen, Lewis x (CD15).

## Recommended Dilutions

**FC** 5 µl per 10<sup>6</sup> cells in  
100 µl volume

## Immunogen Information

### Gene ID

2526

### Swiss Prot

P22083

### Immunogen

Synthetic peptide. This information is considered to be commercially sensitive.

### Synonyms

LeX; CD15; ELFT; FCT3A; FUTIV; SSEA-1; FUC-TIV

## Contact

 | 400-999-6126

 | [cn.market@abclonal.com.cn](mailto:cn.market@abclonal.com.cn)

 | [www.abclonal.com.cn](http://www.abclonal.com.cn)

## Product Information

### Source

Mouse

### Isotype

IgM

### Purification

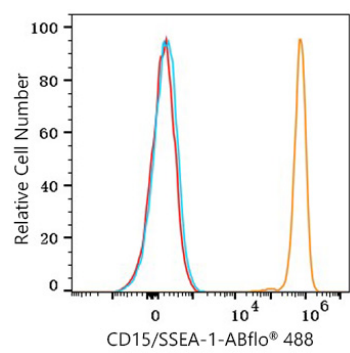
Affinity purification

### Storage

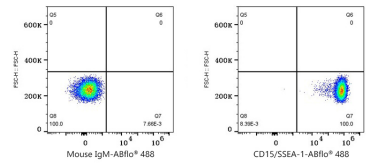
Store at 2-8°C. Avoid freeze.

Buffer: PBS with 0.09% Sodium azide, 0.2% BSA, pH7.3.

# Validation Data



Flow cytometry: 1X10<sup>6</sup> Human peripheral blood granulocytes were surface-stained with ABflo® 488 Mouse anti-Human CD15/SSEA-1 mAb (A26929,5 µl/Test,orange line) or ABflo® 488 Mouse IgM isotype control (5 µl/Test,blue line). Non-fluorescently stained cells were used as blank control (red line).Cells in the granulocytes gate were used for analysis.



Flow cytometry: 1X10<sup>6</sup> Human peripheral blood granulocytes were surface-stained with ABflo® 488 Mouse IgM isotype control (5 µl/Test,left) or ABflo® 488 Mouse anti-Human CD15/SSEA-1 mAb (A26929,5 µl/Test,right).Cells in the granulocytes gate were used for analysis.