

# ABflo® 700 Rabbit anti-Human CD2 mAb

Catalog No.: A26939

## Basic Information

### Observed MW

**Calculated MW**  
39kDa

**Category**  
Primary antibody

**Applications**  
FC

**Cross-Reactivity**  
Human

**CloneNo number**  
ARC59333

**Conjugate**  
ABflo® 700. Ex:690nm. Em:713nm.

## Background

The protein encoded by this gene is a surface antigen found on all peripheral blood T-cells. The encoded protein interacts with LFA3 (CD58) on antigen presenting cells to optimize immune recognition. A locus control region (LCR) has been found in the 3' flanking sequence of this gene.

## Recommended Dilutions

**FC** 5 µl per 10<sup>6</sup> cells in  
100 µl volume

## Immunogen Information

| Gene ID | Swiss Prot |
|---------|------------|
| 914     | P06729     |

### Immunogen

Recombinant protein (or fragment). This information is considered to be commercially sensitive.

### Synonyms

T11; SRBC; LFA-2

## Contact

|   |                           |
|---|---------------------------|
| ☎ | 400-999-6126              |
| ✉ | cn.market@abclonal.com.cn |
| 🌐 | www.abclonal.com.cn       |

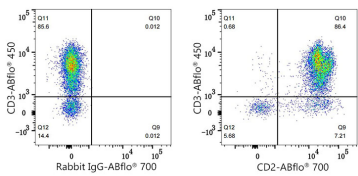
## Product Information

| Source | Isotype | Purification          |
|--------|---------|-----------------------|
| Rabbit | IgG     | Affinity purification |

### Storage

Store at 2-8°C. Avoid freeze.  
Buffer: PBS with 0.09% Sodium azide, 0.2% BSA, pH7.3.

# Validation Data



Flow cytometry:1X10<sup>6</sup> Human PBMC were surface-stained with ABflo® 450 Mouse anti-Human CD3 mAb (A25189,5 µl/Test) and ABflo® 700 Rabbit IgG isotype control (A25976,5 µl/Test,left) or ABflo® 700 Rabbit anti-Human CD2 mAb (A26939,5 µl/Test,right). Cells in the lymphocyte gate were used for analysis.