

ABflo® 700 Rabbit anti-Human PD-L1/CD274 mAb

Catalog No.: A27102

Basic Information

Observed MW

Calculated MW

33kDa

Category

Primary antibody

Applications

FC

Cross-Reactivity

Human

CloneNo number

ARC5128-01

Conjugate

ABflo® 700. Ex:690nm. Em:713nm.

Background

This gene encodes an immune inhibitory receptor ligand that is expressed by hematopoietic and non-hematopoietic cells, such as T cells and B cells and various types of tumor cells. The encoded protein is a type I transmembrane protein that has immunoglobulin V-like and C-like domains. Interaction of this ligand with its receptor inhibits T-cell activation and cytokine production. During infection or inflammation of normal tissue, this interaction is important for preventing autoimmunity by maintaining homeostasis of the immune response. In tumor microenvironments, this interaction provides an immune escape for tumor cells through cytotoxic T-cell inactivation. Expression of this gene in tumor cells is considered to be prognostic in many types of human malignancies, including colon cancer and renal cell carcinoma. Alternative splicing results in multiple transcript variants.

Recommended Dilutions

FC 5 µl per 10⁶ cells in
100 µl volume

Immunogen Information

Gene ID

29126

Swiss Prot

Q9NZQ7

Immunogen

Recombinant protein (or fragment). This information is considered to be commercially sensitive.

Synonyms

B7-H; B7H1; PDL1; PD-L1; hPD-L1; PDCD1L1; PDCD1LG1

Contact

☎ | 400-999-6126

✉ | cn.market@abclonal.com.cn

🌐 | www.abclonal.com.cn

Product Information

Source

Rabbit

Isotype

IgG

Purification

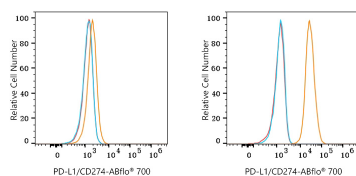
Affinity purification

Storage

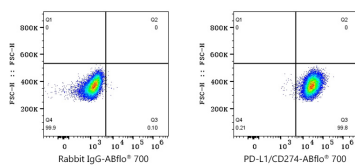
Store at 2-8°C. Avoid freeze.

Buffer: PBS with 0.09% Sodium azide, 0.2% BSA, pH7.3.

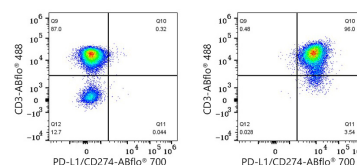
Validation Data



Flow cytometry: 1×10^6 A549 cells (negative control, left) and A549 cells (treated with IFN- γ , right) were surface-stained with ABflo® 700 Rabbit anti-Human PD-L1/CD274 mAb (A27102, 2 μ l/Test, orange line) or ABflo® 700 Rabbit IgG isotype control (A25976, 2 μ l/Test, blue line). Non-fluorescently stained cells were used as blank control (red line).



Flow cytometry: 1×10^6 A549 cells (treated with IFN- γ) were surface-stained with ABflo® 700 Rabbit IgG isotype control (A25976, 2 μ l/Test, left) or ABflo® 700 Rabbit anti-Human PD-L1/CD274 mAb (A27102, 2 μ l/Test, right), followed by .



Flow cytometry: 1×10^6 Human PBMC (untreated, left) and Human PBMC (treated with 5 μ g/mL PHA for 72 hours, right) were surface-stained with ABflo® 488 Rabbit anti-Human/Monkey CD3 mAb (A26283, 5 μ l/Test) and ABflo® 700 Rabbit anti-Human PD-L1/CD274 mAb (A27102, 5 μ l/Test). Cells in the lymphocyte gate were used for analysis.