

ABflo® 610 Rabbit anti-Human CD335/NKp46 mAb

Catalog No.: A27141

Basic Information

Observed MW

Calculated MW

21kDa/22kDa/23kDa/32kDa/34kDa

Category

Primary antibody

Applications

FC

Cross-Reactivity

Human

CloneNo number

ARC62449

Conjugate

ABflo® 610. Ex:421nm. Em:612nm.

Background

Predicted to be involved in cellular defense response; regulation of natural killer cell mediated cytotoxicity; and signal transduction. Predicted to act upstream of or within defense response to virus and detection of virus. Predicted to be located in cell surface. Predicted to be part of SWI/SNF complex. Predicted to be active in plasma membrane. Biomarker of acquired immunodeficiency syndrome; anogenital venereal wart; hepatitis C; and lymphoproliferative syndrome.

Recommended Dilutions

FC 5 µl per 10⁶ cells in
100 µl volume

Immunogen Information

Gene ID

9437

Swiss Prot

O76036

Immunogen

Recombinant protein (or fragment). This information is considered to be commercially sensitive.

Synonyms

LY94; CD335; NKP46; NK-p46

Contact

☎ | 400-999-6126

✉ | cn.market@abclonal.com.cn

🌐 | www.abclonal.com.cn

Product Information

Source

Rabbit

Isotype

IgG

Purification

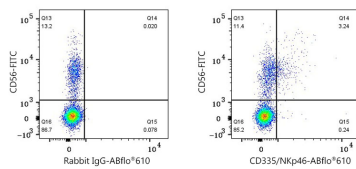
Affinity purification

Storage

Store at 2-8°C. Avoid freeze.

Buffer: PBS with 0.09% Sodium azide, 0.2% BSA, pH7.3.

Validation Data



Flow cytometry: 1X10⁶ Human PBMC were surface-stained with FITC Rabbit anti-Human CD56 mAb (5 µl/Test) and ABflo® 610 Rabbit IgG isotype control (A25826, 5 µl/Test, left) or ABflo® 610 Rabbit anti-Human CD335/NKp46 mAb (A27141, 5 µl/Test, right). Cells in the lymphocyte gate were used for analysis.