

PE Rabbit anti-Human CD85d/e/i/j mAb

Catalog No.: A27607

Basic Information

Observed MW

Calculated MW

65kDa

Category

Primary antibody

Applications

FC

Cross-Reactivity

Human

CloneNo number

ARC68849

Conjugate

PE. Ex:565nm. Em:574nm.

Background

This gene is a member of the leukocyte immunoglobulin-like receptor (LIR) family, which is found in a gene cluster at chromosomal region 19q13.4. The encoded protein belongs to the subfamily B class of LIR receptors which contain two or four extracellular immunoglobulin domains, a transmembrane domain, and two to four cytoplasmic immunoreceptor tyrosine-based inhibitory motifs (ITIMs). The receptor is expressed on immune cells where it binds to MHC class I molecules on antigen-presenting cells and transduces a negative signal that inhibits stimulation of an immune response. It is thought to control inflammatory responses and cytotoxicity to help focus the immune response and limit autoreactivity. Multiple transcript variants encoding different isoforms have been found for this gene.

Recommended Dilutions

FC 5 µl per 10⁶ cells in
100 µl volume

Immunogen Information

Gene ID

10288/11026/11024/10859

Swiss Prot

Q8N423/Q8N6C8/O75019/Q8NHL6

Immunogen

Recombinant protein (or fragment). This information is considered to be commercially sensitive.

Synonyms

ILT4; LIR2; CD85D; ILT-4; LIR-2; MIR10; MIR-10

Contact

☎ | 400-999-6126

✉ | cn.market@abclonal.com.cn

🌐 | www.abclonal.com.cn

Product Information

Source

Rabbit

Isotype

IgG

Purification

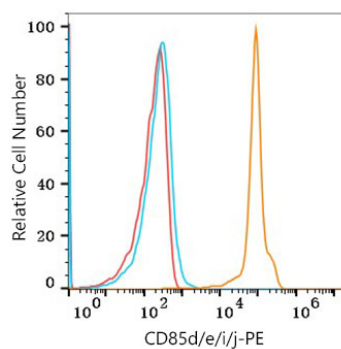
Affinity purification

Storage

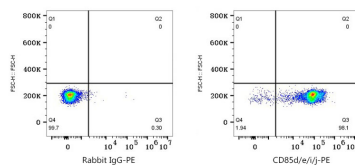
Store at 2-8°C. Avoid freeze.

Buffer: PBS with 0.09% Sodium azide, 0.2% BSA, pH7.3.

Validation Data



Flow cytometry: 1×10^6 Human PBMC were surface-stained with PE Rabbit anti-Human CD85d/e/i/j mAb (A27607, 5 μ l/Test, orange line) or PE Rabbit IgG isotype control (A24172, 5 μ l/Test, blue line). Non-fluorescently stained cells were used as blank control (red line). Cells in the monocyte gate were used for analysis.



Flow cytometry: 1×10^6 Human PBMC were surface-stained with PE Rabbit IgG isotype control (A24172, 5 μ l/Test, left) or PE Rabbit anti-Human CD85d/e/i/j mAb (A27607, 5 μ l/Test, right). Cells in the monocyte gate were used for analysis.