

[KO Validated] GSK3 β Rabbit mAb

Catalog No.: A27666 **KO** Validated

Basic Information

Observed MW

46 kDa

Calculated MW

47kDa

Category

Primary antibody

Applications

WB,IP,IF/ICC,ELISA

Cross-Reactivity

Human, Mouse, Rat

CloneNo number

ARC70826

Background

The protein encoded by this gene is a serine-threonine kinase belonging to the glycogen synthase kinase subfamily. It is a negative regulator of glucose homeostasis and is involved in energy metabolism, inflammation, ER-stress, mitochondrial dysfunction, and apoptotic pathways. Defects in this gene have been associated with Parkinson disease and Alzheimer disease.

Recommended Dilutions

WB 1:5000 - 1:20000

IP 0.5 μ g-4 μ g antibody for
300 μ g-500 μ g extracts of
whole cells

IF/ICC 1:200 - 1:1000

ELISA Recommended starting
concentration is 1 μ g/mL.
Please optimize the
concentration based on
your specific assay
requirements. For high-
ratio antibody dilutions
($\geq 1:10000$) a sequential
dilution method is
strongly recommended
to ensure measurement
accuracy.

Immunogen Information

Gene ID

2932

Swiss Prot

P49841

Immunogen

Synthetic peptide. This information is considered to be commercially sensitive.

Synonyms

Product Information

Source

Rabbit

Isotype

IgG

Purification

Affinity purification

Storage

Store at -20°C. Avoid freeze / thaw cycles.

Buffer: PBS with 0.09% Sodium azide,0.05% BSA,50% glycerol,pH7.3.

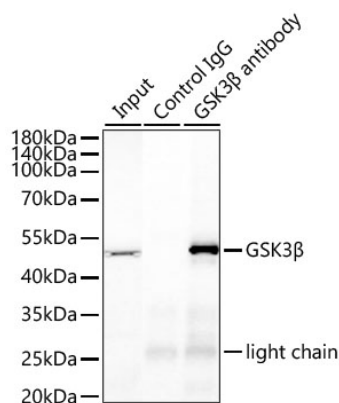
Contact

☎ | 400-999-6126

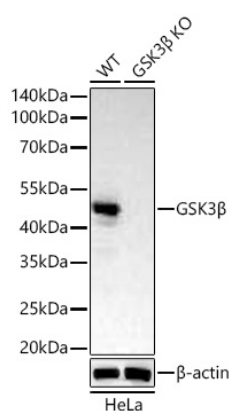
✉ | cn.market@abclonal.com.cn

🌐 | www.abclonal.com.cn

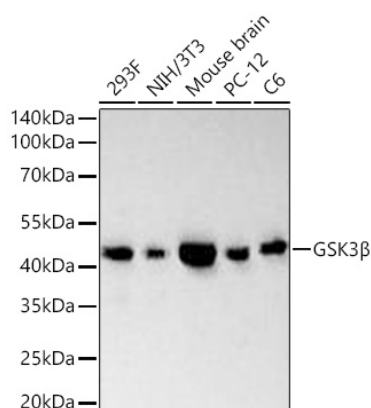
Validation Data



Immunoprecipitation of GSK3β from 400 µg extracts of PC-12 cells was performed using 1 µg of [KO Validated] GSK3β Rabbit mAb (A27666). Rabbit IgG isotype control (AC005) was used to precipitate the Control IgG sample. IP samples were eluted with 1X reducing Laemmli Buffer. The Input lane represents 10% of the total input. Western blot analysis of immunoprecipitates was conducted using [KO Validated] GSK3β Rabbit mAb (A27666) at a dilution of 1:5000.

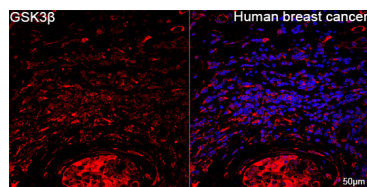


Western blot analysis of lysates from wild type (WT) and GSK3β knockout (KO) HeLa cells using [KO Validated] GSK3β Rabbit mAb (A27666) at 1:10000 dilution incubated overnight at 4°C. Secondary antibody: HRP-conjugated Goat anti-Rabbit IgG (H+L) (AS014) at 1:10000 dilution. Lysates/proteins: 25 µg per lane. Blocking buffer: 3% nonfat dry milk in TBST. Detection: ECL Basic Kit (RM00020). Exposure time: 60 s.

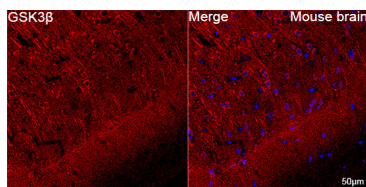


Western blot analysis of various lysates using [KO Validated] GSK3β Rabbit mAb (A27666) at 1:10000 dilution incubated overnight at 4°C. Secondary antibody: HRP-conjugated Goat anti-Rabbit IgG (H+L) (AS014) at 1:10000 dilution. Lysates/proteins: 25 µg per lane. Blocking buffer: 3% nonfat dry milk in TBST. Detection: ECL Basic Kit (RM00020). Exposure time: 60 s.

Validation Data



Confocal imaging of paraffin-embedded Human breast cancer tissue using [KO Validated] GSK3 β Rabbit mAb (A27666, dilution 1:200) followed by a further incubation with Cy3 Goat Anti-Rabbit IgG (H+L) (AS007, dilution 1:500) (Red). DAPI was used for nuclear staining (Blue). High pressure antigen retrieval performed with 0.01M Citrate Buffer (pH 6.0) prior to IF staining. Objective: 40x.



Confocal imaging of paraffin-embedded Mouse brain tissue using [KO Validated] GSK3 β Rabbit mAb (A27666, dilution 1:200) followed by a further incubation with Cy3 Goat Anti-Rabbit IgG (H+L) (AS007, dilution 1:500) (Red). DAPI was used for nuclear staining (Blue). High pressure antigen retrieval performed with 0.01M Citrate Buffer (pH 6.0) prior to IF staining. Objective: 40x.