

ABflo® 594 Rabbit anti-Human CD197/CCR7 mAb

Catalog No.: A27683

Basic Information

Observed MW

Calculated MW

43kDa

Category

Primary antibody

Applications

FC

Cross-Reactivity

Human

CloneNo number

ARC64945

Conjugate

ABflo® 594. Ex:588nm. Em:604nm.

Background

The protein encoded by this gene is a member of the G protein-coupled receptor family. This receptor was identified as a gene induced by the Epstein-Barr virus (EBV), and is thought to be a mediator of EBV effects on B lymphocytes. This receptor is expressed in various lymphoid tissues and activates B and T lymphocytes. It has been shown to control the migration of memory T cells to inflamed tissues, as well as stimulate dendritic cell maturation. The chemokine (C-C motif) ligand 19 (CCL19/ECL) has been reported to be a specific ligand of this receptor. Signals mediated by this receptor regulate T cell homeostasis in lymph nodes, and may also function in the activation and polarization of T cells, and in chronic inflammation pathogenesis. Alternative splicing of this gene results in multiple transcript variants.

Recommended Dilutions

FC 5 µl per 10⁶ cells in
100 µl volume

Immunogen Information

Gene ID

1236

Swiss Prot

P32248

Immunogen

Recombinant protein (or fragment). This information is considered to be commercially sensitive.

Synonyms

BLR2; EBI1; CCR-7; CD197; CDw197; CMKBR7; CC-CKR-7

Contact

☎ | 400-999-6126

✉ | cn.market@abclonal.com.cn

🌐 | www.abclonal.com.cn

Product Information

Source

Rabbit

Isotype

IgG

Purification

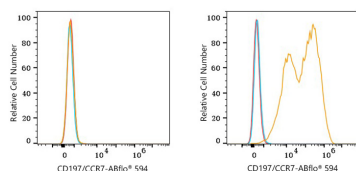
Affinity purification

Storage

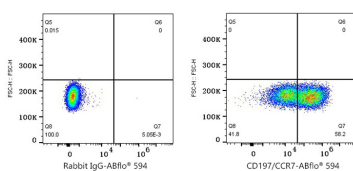
Store at 2-8°C. Avoid freeze.

Buffer: PBS containing 0.2% BSA, preserved with proclin300 or sodium azide (as specified on the Certificate of Analysis), pH 7.3.

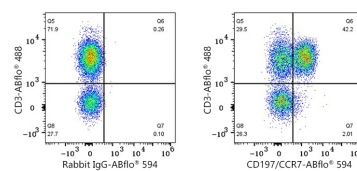
Validation Data



Flow cytometry: 1×10^6 293T cells (negative control, left) and 293T (Transfection, right) cells were surface-stained with ABflo® 594 Rabbit anti-Human CD197/CCR7 mAb (A27683, 5 μ l/Test, orange line) or ABflo® 594 Rabbit IgG isotype control (A23821, 5 μ l/Test, blue line). Non-fluorescently stained cells were used as blank control (red line).



Flow cytometry: 1×10^6 293T (Transfection) cells were surface-stained with ABflo® 594 Rabbit IgG isotype control (A23821, 5 μ l/Test, left) or ABflo® 594 Rabbit anti-Human CD197/CCR7 mAb (A27683, 5 μ l/Test, right).



Flow cytometry: 1×10^6 Human PBMC were surface-stained with ABflo® 488 Rabbit anti-Human/Monkey CD3 mAb (A26283, 5 μ l/Test) and ABflo® 594 Rabbit IgG isotype control (A23821, 5 μ l/Test, left) or ABflo® 594 Rabbit anti-Human CD197/CCR7 mAb (A27683, 5 μ l/Test, right). Cells in the lymphocyte gate were used for analysis.