

PE Rabbit anti-Human CD22 mAb

Catalog No.: A27750

Basic Information

Observed MW

Calculated MW

95kDa

Category

Primary antibody

Applications

FC

Cross-Reactivity

Human

CloneNo number

ARC59252

Conjugate

PE. Ex:565nm. Em:574nm.

Background

Predicted to enable CD4 receptor binding activity; protein phosphatase binding activity; and sialic acid binding activity. Involved in B cell activation; negative regulation of B cell receptor signaling pathway; and regulation of endocytosis. Located in early endosome and recycling endosome.

Recommended Dilutions

FC 5 µl per 10⁶ cells in
100 µl volume

Immunogen Information

Gene ID

933

Swiss Prot

P20273

Immunogen

Recombinant protein (or fragment). This information is considered to be commercially sensitive.

Synonyms

SIGLEC2; SIGLEC-2

Contact

 | 400-999-6126

 | cn.market@abclonal.com.cn

 | www.abclonal.com.cn

Product Information

Source

Rabbit

Isotype

IgG

Purification

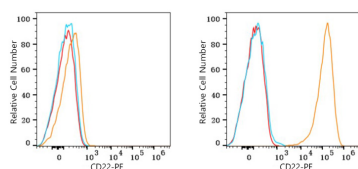
Affinity purification

Storage

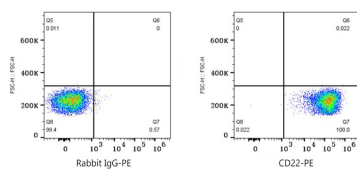
Store at 2-8°C. Avoid freeze.

Buffer: PBS with 0.09% Sodium azide, 0.2% BSA, pH7.3.

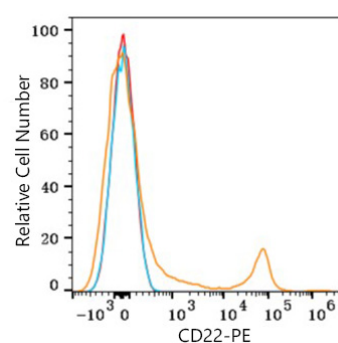
Validation Data



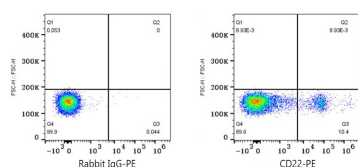
Flow cytometry: 1×10^6 Jurkat cells (negative control, left) and Daudi cells (right) were surface-stained with PE Rabbit anti-Human CD22 mAb (A27750, 5 μ l/Test, orange line) or PE Rabbit IgG isotype control (A24172, 5 μ l/Test, blue line). Non-fluorescently stained cells were used as blank control (red line).



Flow cytometry: 1×10^6 Daudi cells were surface-stained with PE Rabbit IgG isotype control (A24172, 5 μ l/Test, left) or PE Rabbit anti-Human CD22 mAb (A27750, 5 μ l/Test, right).



Flow cytometry: 1×10^6 Human PBMC were surface-stained with PE Rabbit anti-Human CD22 mAb (A27750, 5 μ l/Test, orange line) or PE Rabbit IgG isotype control (A24172, 5 μ l/Test, blue line). Non-fluorescently stained cells were used as blank control (red line). Cells in the lymphocyte gate were used for analysis.



Flow cytometry: 1×10^6 Human PBMC were surface-stained with PE Rabbit IgG isotype control (A24172, 5 μ l/Test, left) or PE Rabbit anti-Human CD22 mAb (A27750, 5 μ l/Test, right). Cells in the lymphocyte gate were used for analysis.