

PE Rabbit anti-Human CD235a/Glycophorin A mAb

Catalog No.: A27780

Basic Information

Observed MW

Calculated MW

13kDa/16kDa

Category

Primary antibody

Applications

FC

Cross-Reactivity

Human

CloneNo number

ARC58031

Conjugate

PE. Ex:565nm. Em:574nm.

Background

Glycophorins A (GYPA) and B (GYPB) are major sialoglycoproteins of the human erythrocyte membrane which bear the antigenic determinants for the MN and Ss blood groups. In addition to the M or N and S or s antigens that commonly occur in all populations, about 40 related variant phenotypes have been identified. These variants include all the variants of the Miltenberger complex and several isoforms of Sta, as well as Dantu, Sat, He, Mg, and deletion variants Ena, S-s-U- and Mk. Most of the variants are the result of gene recombinations between GYPA and GYPB.

Recommended Dilutions

FC 5 µl per 10⁶ cells in
100 µl volume

Immunogen Information

Gene ID

2993

Swiss Prot

P02724

Immunogen

Recombinant protein (or fragment). This information is considered to be commercially sensitive.

Synonyms

MN; GPA; MNS; GPSAT; PAS-2; CD235a; GP_Erik; HGpMiV; HGpMiXI; HGpSta(C)

Contact

☎ | 400-999-6126

✉ | cn.market@abclonal.com.cn

🌐 | www.abclonal.com.cn

Product Information

Source

Rabbit

Isotype

IgG

Purification

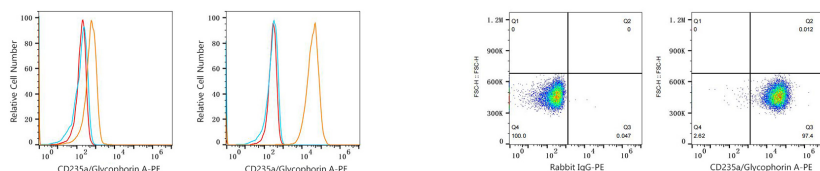
Affinity purification

Storage

Store at 2-8°C. Avoid freeze.

Buffer: PBS with 0.09% Sodium azide, 0.2% BSA, pH7.3.

Validation Data



Flow cytometry: 1×10^6 THP-1 cells (negative control, left) and HEL cells (right) were surface-stained with PE Rabbit anti-Human CD235a/Glycophorin A mAb (A27780, 5 μ l/Test, orange line) or PE Rabbit IgG isotype control (A24172, 5 μ l/Test, blue line). Non-fluorescently stained cells were used as blank control (red line).

Flow cytometry: 1×10^6 HEL cells were surface-stained with PE Rabbit IgG isotype control (A24172, 5 μ l/Test, left) or PE Rabbit anti-Human CD235a/Glycophorin A mAb (A27780, 5 μ l/Test, right).