

ABflo® 450 Rabbit anti-Human CD99 mAb

Catalog No.: A27781

Basic Information

Observed MW

Calculated MW

19kDa

Category

Primary antibody

Applications

FC

Cross-Reactivity

Human

CloneNo number

ARC67259

Conjugate

ABflo® 450. Ex:406nm. Em:445nm.

Background

The protein encoded by this gene is a cell surface glycoprotein involved in leukocyte migration, T-cell adhesion, ganglioside GM1 and transmembrane protein transport, and T-cell death by a caspase-independent pathway. In addition, the encoded protein may have the ability to rearrange the actin cytoskeleton and may also act as an oncosuppressor in osteosarcoma. This gene is found in the pseudoautosomal region of chromosomes X and Y and escapes X-chromosome inactivation. There is a related pseudogene located immediately adjacent to this locus.

Recommended Dilutions

FC 5 µl per 10⁶ cells in
100 µl volume

Immunogen Information

Gene ID

4267

Swiss Prot

P14209

Immunogen

Synthetic peptide. This information is considered to be commercially sensitive.

Synonyms

MIC2; HBA71; MIC2X; MIC2Y; MSK5X

Contact

☎ | 400-999-6126

✉ | cn.market@abclonal.com.cn

🌐 | www.abclonal.com.cn

Product Information

Source

Rabbit

Isotype

IgG

Purification

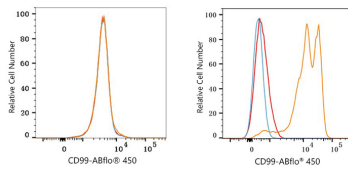
Affinity purification

Storage

Store at 2-8°C. Avoid freeze.

Buffer: PBS with 0.09% Sodium azide, 0.2% BSA, pH7.3.

Validation Data



Flow cytometry: 1X10⁶ Raji cells (negative control, left) and Human PBMC (right) were surface-stained with ABflo® 450 Rabbit anti-Human CD99 mAb (A27781, 5 µl/Test, orange line) or ABflo® 450 Rabbit IgG isotype control (A27451, 5 µl/Test, blue line). Non-fluorescently stained cells were used as blank control (red line). Cells in the lymphocyte gate were used for analysis.