

IKK beta Rabbit mAb

Catalog No.: A27876 **Recombinant**

Basic Information

Observed MW

95 kDa

Calculated MW

87 kDa

Category

Primary antibody

Applications

WB, IF/ICC, IP, ELISA

Cross-Reactivity

Human

CloneNo number

ARC69959

Background

The protein encoded by this gene phosphorylates the inhibitor in the inhibitor/NF-kappa-B complex, causing dissociation of the inhibitor and activation of NF-kappa-B. The encoded protein itself is found in a complex of proteins. Several transcript variants, some protein-coding and some not, have been found for this gene.

Recommended Dilutions

WB 1:14000 - 1:70000

IP 0.5µg-4µg antibody for
200µg-400µg extracts of
whole cells

IF/ICC 1:100 - 1:400

ELISA Recommended starting
concentration is 1 µg/mL.
Please optimize the
concentration based on
your specific assay
requirements. For high-
ratio antibody dilutions
(≥1:10000) a sequential
dilution method is
strongly recommended
to ensure measurement
accuracy.

Immunogen Information

Gene ID

3551

Swiss Prot

O14920

Immunogen

Recombinant fusion protein containing a sequence corresponding to amino acids 261-411 of human IKK beta (NP_001547.1).

Synonyms

IKK2; IKKB; IMD15; IMD15A; IMD15B; NFKBIB; IKK-beta

Product Information

Source

Rabbit

Isotype

IgG

Purification

Affinity purification

Storage

Store at -20°C. Avoid freeze / thaw cycles.

Buffer: PBS with 0.09% Sodium azide, 0.05% BSA, 50% glycerol, pH7.3.

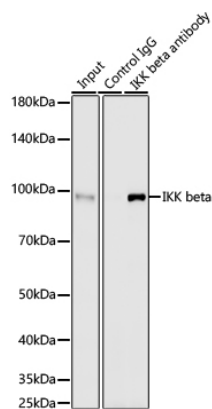
Contact

☎ | 400-999-6126

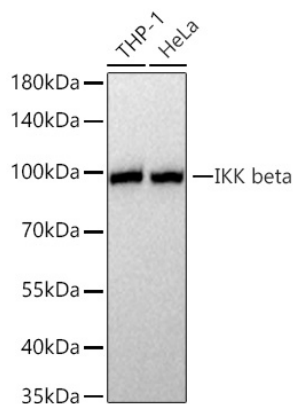
✉ | cn.market@abclonal.com.cn

🌐 | www.abclonal.com.cn

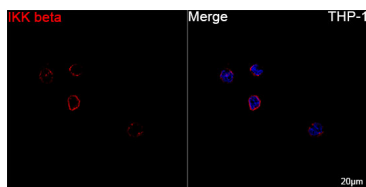
Validation Data



Immunoprecipitation of IKK beta from 300 µg extracts of HeLa cells was performed using 0.5 µg of IKK beta Rabbit mAb (A27876). Rabbit IgG isotype control (AC0005) was used to precipitate the Control IgG sample. IP samples were eluted with 1X reducing Laemmli Buffer. The Input lane represents 30% of the total input. Western blot analysis of immunoprecipitates was conducted using IKK beta Rabbit mAb (A27876) at a dilution of 1:5000.



Western blot analysis of various lysates using IKK beta Rabbit mAb (A27876) at 1:22000 dilution incubated at room temperature for 1.5 hours.
Secondary antibody: HRP-conjugated Goat anti-Rabbit IgG (H+L) (AS014) at 1:10000 dilution.
Lysates/proteins: 25 µg per lane.
Blocking buffer: 3% nonfat dry milk in TBST.
Detection: ECL Basic Kit (RM00020).
Exposure time: 5 s.



Confocal imaging of THP-1 cells using IKK beta Rabbit mAb (A27876, dilution 1:200) followed by a further incubation with Cy3 Goat Anti-Rabbit IgG (H+L) (AS007, dilution 1:500) (Red). DAPI was used for nuclear staining (Blue). Objective: 100x.