

# ABflo® 450 Rabbit anti-Human CD303/BDCA-2 mAb

Catalog No.: A27911

## Basic Information

### Observed MW

### Calculated MW

21kDa/25kDa

### Category

Primary antibody

### Applications

FC

### Cross-Reactivity

Human

### CloneNo number

ARC61684

### Conjugate

ABflo® 450. Ex:406nm. Em:445nm.

## Background

This gene encodes a member of the C-type lectin/C-type lectin-like domain (CTL/CTLD) superfamily. Members of this family share a common protein fold and have diverse functions, such as cell adhesion, cell-cell signalling, glycoprotein turnover, and roles in inflammation and immune response. The encoded type 2 transmembrane protein may play a role in dendritic cell function. Two transcript variants encoding distinct isoforms have been identified for this gene.

## Recommended Dilutions

FC 5 µl per 10<sup>6</sup> cells in  
100 µl volume

## Immunogen Information

### Gene ID

170482

### Swiss Prot

Q8WTT0

### Immunogen

Recombinant protein (or fragment). This information is considered to be commercially sensitive.

### Synonyms

DLEC; HECL; BDCA2; CD303; BDCA-2; CLECSF7; CLECSF11; PRO34150

## Contact

☎ | 400-999-6126

✉ | [cn.market@abclonal.com.cn](mailto:cn.market@abclonal.com.cn)

🌐 | [www.abclonal.com.cn](http://www.abclonal.com.cn)

## Product Information

### Source

Rabbit

### Isotype

IgG

### Purification

Affinity purification

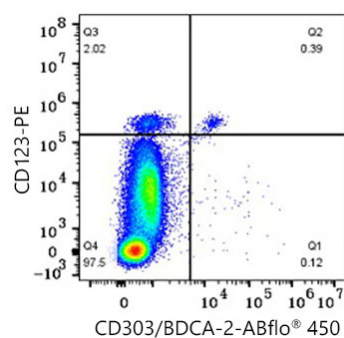
### Storage

Store at 2-8°C. Avoid freeze.

Buffer: PBS with 0.09% Sodium azide, 0.2% BSA, pH7.3.

## Validation Data

---



Flow cytometry:  $1 \times 10^6$  Human PBMC were surface-stained with PE anti-human CD123 Antibody (5  $\mu$ l/Test) and ABflo® 450 Rabbit anti-Human CD303/BDCA-2 mAb (A27911, 5  $\mu$ l/Test). Cells in the lymphocyte and monocyte gates were used for analysis.