

FITC Rabbit anti-Human CD44 mAb

Catalog No.: A28105

Basic Information

Observed MW

Refer to figures

Calculated MW

82kDa

Category

Primary antibody

Applications

FC

Cross-Reactivity

Human

CloneNo number

ARC52412-FITC

Conjugate

FITC. Ex:491nm. Em:516nm.

Recommended Dilutions

FC 5 μ l per 10^6 cells in
100 μ l volume

Background

The protein encoded by this gene is a cell-surface glycoprotein involved in cell-cell interactions, cell adhesion and migration. It is a receptor for hyaluronic acid (HA) and can also interact with other ligands, such as osteopontin, collagens, and matrix metalloproteinases (MMPs). This protein participates in a wide variety of cellular functions including lymphocyte activation, recirculation and homing, hematopoiesis, and tumor metastasis. Transcripts for this gene undergo complex alternative splicing that results in many functionally distinct isoforms, however, the full length nature of some of these variants has not been determined. Alternative splicing is the basis for the structural and functional diversity of this protein, and may be related to tumor metastasis.

Immunogen Information

Gene ID

960

Swiss Prot

P16070

Immunogen

Recombinant protein (or fragment). This information is considered to be commercially sensitive.

Synonyms

CD44; CDW44; CSPG8; ECMR-III; HCELL; HUTCH-I; IN; LHR; MC56; MDU2; MDU3; MIC4; Pgp1; CD44 antigen

Contact

☎ | 400-999-6126

✉ | cn.market@abclonal.com.cn

🌐 | www.abclonal.com.cn

Product Information

Source

Rabbit

Isotype

IgG

Purification

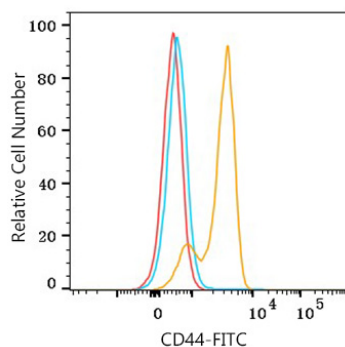
Affinity purification

Storage

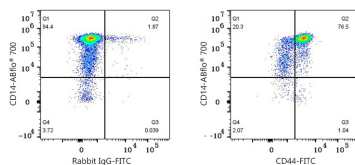
Store at 2-8°C. Avoid freeze.

Buffer: PBS with 0.09% Sodium azide, 0.2% BSA, pH7.3.

Validation Data



Flow cytometry: 1×10^6 Human PBMC were surface-stained with FITC Rabbit anti-Human CD44 mAb (A28105, 5 μ l/Test, orange line) or FITC Rabbit IgG isotype control (A25616, 5 μ l/Test, blue line). Non-fluorescently stained cells were used as blank control (red line). Cells in the monocyte gate were used for analysis.



Flow cytometry: 1×10^6 Human PBMC were surface-stained with ABflo® 700 Rabbit anti-Human/Monkey CD14 mAb (A25948, 5 μ l/Test) and FITC Rabbit IgG isotype control (A25616, 5 μ l/Test, left) or FITC Rabbit anti-Human CD44 mAb (A28105, 5 μ l/Test, right). Cells in the monocyte gate were used for analysis.