

# ABflo® 647 Rabbit anti-Human IL-10RA/CD210 mAb

Catalog No.: A28197

## Basic Information

### Observed MW

### Calculated MW

63 kDa

### Category

Primary antibody

### Applications

FC

### Cross-Reactivity

Human

### CloneNo number

ARC63596

### Conjugate

ABflo® 647. Ex:648nm. Em:664nm.

## Background

The protein encoded by this gene is a receptor for interleukin 10. This protein is structurally related to interferon receptors. It has been shown to mediate the immunosuppressive signal of interleukin 10, and thus inhibits the synthesis of proinflammatory cytokines. This receptor is reported to promote survival of progenitor myeloid cells through the insulin receptor substrate-2/PI 3-kinase/AKT pathway. Activation of this receptor leads to tyrosine phosphorylation of JAK1 and TYK2 kinases. Two transcript variants, one protein-coding and the other not protein-coding, have been found for this gene.

## Recommended Dilutions

FC 5 µl per 10<sup>6</sup> cells in  
100 µl volume

## Immunogen Information

### Gene ID

3587

### Swiss Prot

Q13651

### Immunogen

Recombinant protein (or fragment). This information is considered to be commercially sensitive.

### Synonyms

CD210; IL10R; CD210a; CDW210A; HIL-10R; IL-10R1

## Contact

☎ | 400-999-6126

✉ | [cn.market@abclonal.com.cn](mailto:cn.market@abclonal.com.cn)

🌐 | [www.abclonal.com.cn](http://www.abclonal.com.cn)

## Product Information

### Source

Rabbit

### Isotype

IgG

### Purification

Affinity purification

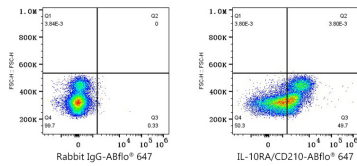
### Storage

Store at 2-8°C. Avoid freeze.

Buffer: PBS with 0.09% Sodium azide, 0.2% BSA, pH7.3.

## Validation Data

---



Flow cytometry: 1X10<sup>6</sup> Human PBMC were surface-stained with ABflo® 647 Rabbit IgG isotype control (A22070,5 µl/Test,left) or ABflo® 647 Rabbit anti-Human IL-10RA/CD210 mAb (A28197,5 µl/Test,right). Cells in the lymphocyte and monocyte gates were used for analysis.