

KMT1B / SUV39H2 Rabbit mAb

Catalog No.: A3705 **Recombinant**

Basic Information

Observed MW

45kDa

Calculated MW

47kDa

Category

Primary antibody

Applications

WB, ELISA

Cross-Reactivity

Human

CloneNo number

ARC0829

Background

Enables S-adenosyl-L-methionine binding activity; histone methyltransferase activity (H3-K9 specific); and zinc ion binding activity. Involved in chromatin assembly or disassembly and chromatin remodeling. Acts upstream of or within cellular response to hypoxia and negative regulation of transcription by RNA polymerase II. Located in chromatin.

Recommended Dilutions

WB 1:500 - 1:1000

ELISA Recommended starting concentration is 1 µg/mL. Please optimize the concentration based on your specific assay requirements.

Immunogen Information

Gene ID

79723

Swiss Prot

Q9H5I1

Immunogen

Synthetic peptide. This information is considered to be commercially sensitive.

Synonyms

KMT1B; KMT1B / SUV39H2

Contact

☎ | 400-999-6126

✉ | cn.market@abclonal.com.cn

🌐 | www.abclonal.com.cn

Product Information

Source

Rabbit

Isotype

IgG

Purification

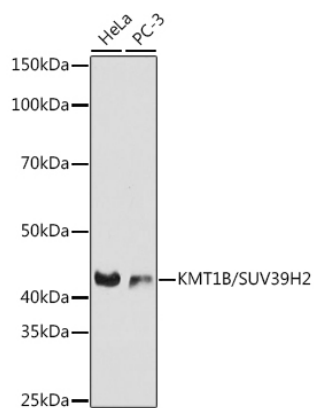
Affinity purification

Storage

Store at -20°C. Avoid freeze / thaw cycles.

Buffer: PBS with 0.02% sodium azide, 0.05% BSA, 50% glycerol, pH7.3.

Validation Data



Western blot analysis of various lysates using KMT1B / SUV39H2 Rabbit mAb (A3705) at 1:1000 dilution.
Secondary antibody: HRP-conjugated Goat anti-Rabbit IgG (H+L) (AS014) at 1:10000 dilution.
Lysates/proteins: 25µg per lane.
Blocking buffer: 3% nonfat dry milk in TBST.
Detection: ECL Basic Kit (RM00020).
Exposure time: 30s.