

# IL3RA Rabbit pAb

Catalog No.: A3926 **2 Publications**

## Basic Information

**Observed MW**

70kDa

**Calculated MW**

43kDa

**Category**

Primary antibody

**Applications**

WB,IHC-P,ELISA

**Cross-Reactivity**

Human, Mouse, Rat

## Background

The protein encoded by this gene is an interleukin 3 specific subunit of a heterodimeric cytokine receptor. The receptor is comprised of a ligand specific alpha subunit and a signal transducing beta subunit shared by the receptors for interleukin 3 (IL3), colony stimulating factor 2 (CSF2/GM-CSF), and interleukin 5 (IL5). The binding of this protein to IL3 depends on the beta subunit. The beta subunit is activated by the ligand binding, and is required for the biological activities of IL3. This gene and the gene encoding the colony stimulating factor 2 receptor alpha chain (CSF2RA) form a cytokine receptor gene cluster in a X-Y pseudoautosomal region on chromosomes X or Y. Alternatively spliced transcript variants encoding distinct isoforms have been found.

## Recommended Dilutions

**WB** 1:500 - 1:2000**IHC-P** 1:100 - 1:200

**ELISA** Recommended starting concentration is 1 µg/mL. Please optimize the concentration based on your specific assay requirements.

## Immunogen Information

**Gene ID**

3563

**Swiss Prot**

P26951

**Immunogen**

Synthetic peptide. This information is considered to be commercially sensitive.

**Synonyms**

IL3R; CD123; IL3RX; IL3RY; IL3RAY; hIL-3Ra; IL-3R-alpha; IL3RA

## Contact

 | 400-999-6126 | [cn.market@abclonal.com.cn](mailto:cn.market@abclonal.com.cn) | [www.abclonal.com.cn](http://www.abclonal.com.cn)

## Product Information

**Source**

Rabbit

**Isotype**

IgG

**Purification**

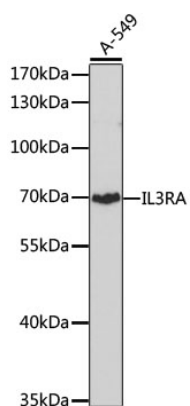
Affinity purification

**Storage**

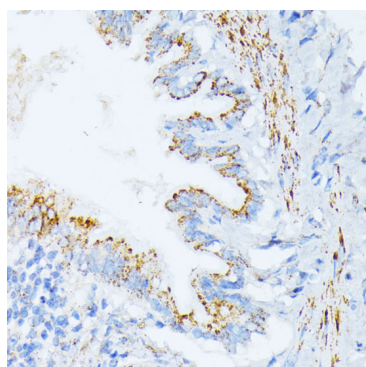
Store at -20°C. Avoid freeze / thaw cycles.

Buffer: PBS with 0.02% sodium azide, 50% glycerol, pH7.3.

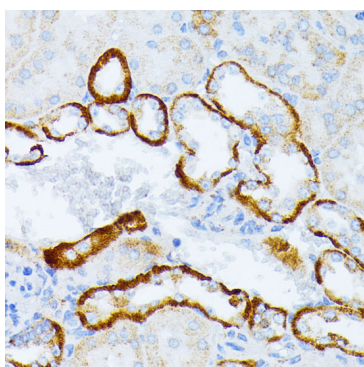
## Validation Data



Western blot analysis of lysates from A-549 cells, using IL3RA Rabbit pAb (A3926) at 1:1000 dilution.  
Secondary antibody: HRP-conjugated Goat anti-Rabbit IgG (H+L) (AS014) at 1:10000 dilution.  
Lysates/proteins: 25µg per lane.  
Blocking buffer: 3% nonfat dry milk in TBST.  
Detection: ECL Basic Kit (RM00020).  
Exposure time: 90s.



Immunohistochemistry analysis of paraffin-embedded Rat lung using IL3RA Rabbit pAb (A3926) at dilution of 1:100 (40x lens).  
Microwave antigen retrieval performed with 0.01M PBS Buffer (pH 7.2) prior to IHC staining.



Immunohistochemistry analysis of paraffin-embedded Mouse kidney using IL3RA Rabbit pAb (A3926) at dilution of 1:100 (40x lens).  
Microwave antigen retrieval performed with 0.01M PBS Buffer (pH 7.2) prior to IHC staining.