

Peroxiredoxin 5 (PRDX5) Rabbit mAb

Catalog No.: A3954 **Recombinant** **1 Publications**

Basic Information

Observed MW

17kDa

Calculated MW

22kDa

Category

Primary antibody

Applications

WB,ELISA

Cross-Reactivity

Human, Mouse, Rat

CloneNo number

ARC0873

Background

This gene encodes a member of the peroxiredoxin family of antioxidant enzymes, which reduce hydrogen peroxide and alkyl hydroperoxides. The encoded protein interacts with peroxisome receptor 1 and plays an antioxidant protective role in different tissues under normal conditions and during inflammatory processes. The use of alternate transcription start sites is thought to result in transcript variants that use different in-frame translational start codons to generate isoforms that are targeted to the mitochondrion (isoform L) or peroxisome/cytoplasm (isoform S). Multiple related pseudogenes have been defined for this gene.

Recommended Dilutions

WB 1:500 - 1:2000

ELISA Recommended starting concentration is 1 µg/mL. Please optimize the concentration based on your specific assay requirements.

Immunogen Information

Gene ID

25824

Swiss Prot

P30044

Immunogen

Synthetic peptide. This information is considered to be commercially sensitive.

Synonyms

PLP; ACR1; B166; PRXV; PMP20; PRDX6; prx-V; SBBI10; AOEB166; HEL-S-55; Peroxiredoxin 5 (PRDX5)

Contact

☎ | 400-999-6126

✉ | cn.market@abclonal.com.cn

🌐 | www.abclonal.com.cn

Product Information

Source

Rabbit

Isotype

IgG

Purification

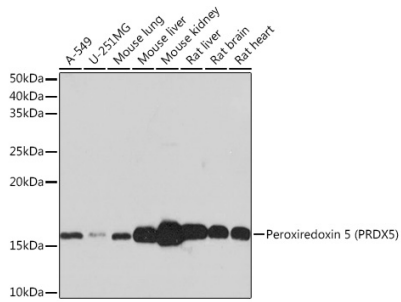
Affinity purification

Storage

Store at -20°C. Avoid freeze / thaw cycles.

Buffer: PBS containing 50% glycerol and 0.05% BSA, preserved with proclin300 or sodium azide (as specified on the Certificate of Analysis), pH 7.3.

Validation Data



Western blot analysis of various lysates using Peroxiredoxin 5 (PRDX5) Rabbit mAb (A3954) at 1:1000 dilution incubated overnight at 4°C.
Secondary antibody: HRP-conjugated Goat anti-Rabbit IgG (H+L) (AS014) at 1:10148 dilution.
Lysates/proteins: 25 µg per lane.
Blocking buffer: 3% nonfat dry milk in TBST.
Detection: ECL Basic Kit (RM00020).
Exposure time: 30 s.