

# JunB Rabbit mAb

Catalog No.: A4848

Recombinant

2 Publications

## Basic Information

### Observed MW

42kDa

### Calculated MW

36kDa

### Category

Primary antibody

### Applications

WB,IHC-P,ELISA

### Cross-Reactivity

Human

### CloneNo number

ARC0268

## Background

Enables sequence-specific double-stranded DNA binding activity. Involved in positive regulation of transcription by RNA polymerase II. Located in nucleoplasm. Part of transcription factor AP-1 complex. Biomarker of Hodgkin's lymphoma and anaplastic large cell lymphoma.

## Recommended Dilutions

**WB** 1:500 - 1:1000

**IHC-P** 1:50 - 1:200

**ELISA** Recommended starting concentration is 1 µg/mL. Please optimize the concentration based on your specific assay requirements.

## Immunogen Information

### Gene ID

3726

### Swiss Prot

P17275

### Immunogen

Synthetic peptide. This information is considered to be commercially sensitive.

### Synonyms

AP-1; JunB

## Contact

☎ | 400-999-6126

✉ | [cn.market@abclonal.com.cn](mailto:cn.market@abclonal.com.cn)

🌐 | [www.abclonal.com.cn](http://www.abclonal.com.cn)

## Product Information

### Source

Rabbit

### Isotype

IgG

### Purification

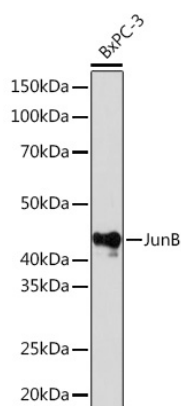
Affinity purification

### Storage

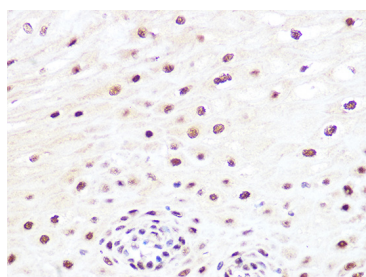
Store at -20°C. Avoid freeze / thaw cycles.

Buffer: PBS with 0.02% sodium azide,0.05% BSA,50% glycerol,pH7.3.

## Validation Data



Western blot analysis of lysates from BxPC-3 cells, using JunB Rabbit mAb (A4848) at 1:1000 dilution.  
Secondary antibody: HRP-conjugated Goat anti-Rabbit IgG (H+L) (AS014) at 1:10000 dilution.  
Lysates/proteins: 25µg per lane.  
Blocking buffer: 3% nonfat dry milk in TBST.  
Detection: ECL Basic Kit (RM00020).  
Exposure time: 30s.



Immunohistochemistry analysis of paraffin-embedded Human esophageal using JunB Rabbit mAb (A4848) at dilution of 1:100 (40x lens). Microwave antigen retrieval performed with 0.01M Tris/EDTA Buffer (pH 9.0) prior to IHC staining.