

CAB39L Rabbit pAb

Catalog No.: A5017

1 Publications

Basic Information

Observed MW

37-39kDa

Calculated MW

39kDa

Category

Primary antibody

Applications

WB, ELISA

Cross-Reactivity

Human, Mouse

Background

Predicted to enable protein serine/threonine kinase activator activity. Predicted to be involved in intracellular signal transduction. Predicted to be located in cytosol.

Recommended Dilutions

WB 1:500 - 1:2000

ELISA Recommended starting concentration is 1 µg/mL. Please optimize the concentration based on your specific assay requirements.

Immunogen Information

Gene ID

81617

Swiss Prot

Q9H9S4

Immunogen

Recombinant protein (or fragment). This information is considered to be commercially sensitive.

Synonyms

MO2L; MO25-BETA; bA103J18.3; CAB39L

Contact

 | 400-999-6126

 | cn.market@abclonal.com.cn

 | www.abclonal.com.cn

Product Information

Source

Rabbit

Isotype

IgG

Purification

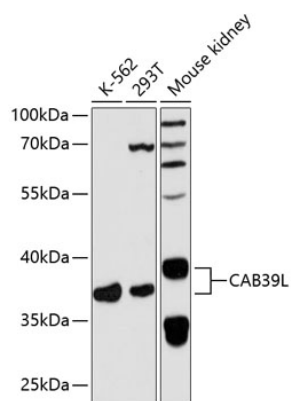
Affinity purification

Storage

Store at -20°C. Avoid freeze / thaw cycles.

Buffer: PBS with 0.01% thimerosal, 50% glycerol, pH7.3.

Validation Data



Western blot analysis of various lysates using CAB39L Rabbit pAb (A5017) at 1:3000 dilution.
Secondary antibody: HRP-conjugated Goat anti-Rabbit IgG (H+L) (A5014) at 1:10000 dilution.
Lysates/proteins: 25µg per lane.
Blocking buffer: 3% nonfat dry milk in TBST.
Detection: ECL Basic Kit (RM00020).
Exposure time: 90s.