

[KO Validated] HADHA Rabbit pAb

Catalog No.: A5346 **KO** **Validated** **2 Publications**

Basic Information

Observed MW

78kDa

Calculated MW

83kDa

Category

Primary antibody

Applications

WB, IF/ICC, IP, ELISA

Cross-Reactivity

Human, Mouse, Rat

Background

This gene encodes the alpha subunit of the mitochondrial trifunctional protein, which catalyzes the last three steps of mitochondrial beta-oxidation of long chain fatty acids. The mitochondrial membrane-bound heterocomplex is composed of four alpha and four beta subunits, with the alpha subunit catalyzing the 3-hydroxyacyl-CoA dehydrogenase and enoyl-CoA hydratase activities. Mutations in this gene result in trifunctional protein deficiency or LCHAD deficiency. The genes of the alpha and beta subunits of the mitochondrial trifunctional protein are located adjacent to each other in the human genome in a head-to-head orientation.

Recommended Dilutions

WB 1:2000 - 1:6000**IF/ICC** 1:50 - 1:200**IP** 0.5µg-4µg antibody for
200µg-400µg extracts of
whole cells**ELISA** Recommended starting
concentration is 1 µg/mL.
Please optimize the
concentration based on
your specific assay
requirements.

Immunogen Information

Gene ID

3030

Swiss Prot

P40939

Immunogen

Recombinant protein (or fragment). This information is considered to be commercially sensitive.

Synonyms

GBP; ECHA; HADH; LCEH; MTPA; LCHAD; TP-ALPHA; HA

Product Information

Source

Rabbit

Isotype

IgG

Purification

Affinity purification

Storage

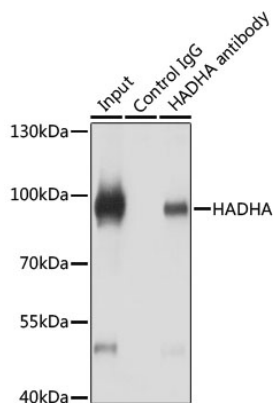
Store at -20°C. Avoid freeze / thaw cycles.

Buffer: PBS with 0.02% sodium azide, 50% glycerol, pH 7.3.

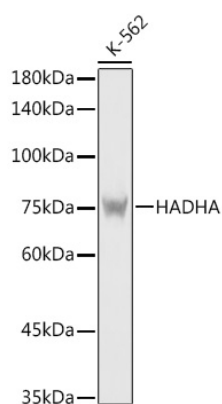
Contact

 | 400-999-6126 | cn.market@abclonal.com.cn | www.abclonal.com.cn

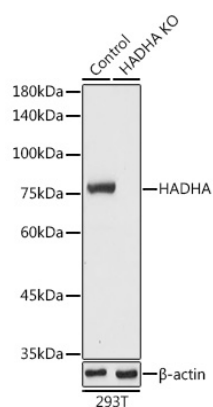
Validation Data



Immunoprecipitation analysis of 200 µg extracts of HeLa cells using 3 µg HADHA antibody (A5346). Western blot was performed from the immunoprecipitate using HADHA antibody (A5346) at a dilution of 1:1000.

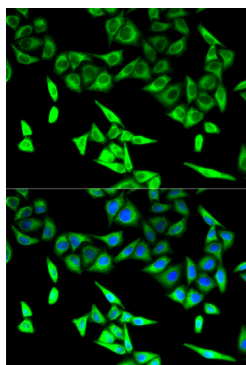


Western blot analysis of lysates from K-562 cells, using [KO Validated] HADHA Rabbit pAb (A5346) at 1:5000 dilution.
Secondary antibody: HRP-conjugated Goat anti-Rabbit IgG (H+L) (AS014) at 1:10000 dilution.
Lysates/proteins: 25µg per lane.
Blocking buffer: 3% nonfat dry milk in TBST.
Detection: ECL Basic Kit (RM00020).
Exposure time: 1s.

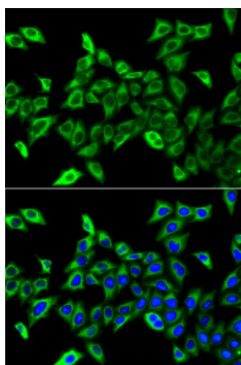


Western blot analysis of lysates from wild type (WT) and HADHA knockout (KO) 293T cells, using [KO Validated] HADHA Rabbit pAb (A5346) at 1:5000 dilution.
Secondary antibody: HRP-conjugated Goat anti-Rabbit IgG (H+L) (AS014) at 1:10000 dilution.
Lysates/proteins: 25µg per lane.
Blocking buffer: 3% nonfat dry milk in TBST.
Detection: ECL Basic Kit (RM00020).
Exposure time: 1s.

Validation Data



Immunofluorescence analysis of U2OS cells using [KO Validated] HADHA Rabbit pAb (A5346). Secondary antibody: Cy3-conjugated Goat anti-Rabbit IgG (H+L) (AS007) at 1:500 dilution. Blue: DAPI for nuclear staining.



Immunofluorescence analysis of A-549 cells using [KO Validated] HADHA Rabbit pAb (A5346). Secondary antibody: Cy3-conjugated Goat anti-Rabbit IgG (H+L) (AS007) at 1:500 dilution. Blue: DAPI for nuclear staining.