

IQGAP1 Rabbit pAb

Catalog No.: A5679

1 Publications

Basic Information

Observed MW

189kDa/189kDa

Calculated MW

189kDa

Category

Primary antibody

Applications

WB, IHC-P, IF/ICC, IP, ELISA

Cross-Reactivity

Human, Mouse, Rat

Background

This gene encodes a member of the IQGAP family. The protein contains four IQ domains, one calponin homology domain, one Ras-GAP domain and one WW domain. It interacts with components of the cytoskeleton, with cell adhesion molecules, and with several signaling molecules to regulate cell morphology and motility. Expression of the protein is upregulated by gene amplification in two gastric cancer cell lines.

Recommended Dilutions

WB	1:500 - 1:2000
IHC-P	1:50 - 1:200
IF/ICC	1:50 - 1:100
IP	0.5µg-4µg antibody for 200µg-400µg extracts of whole cells
ELISA	Recommended starting concentration is 1 µg/mL. Please optimize the concentration based on your specific assay requirements.

Contact

☎ | 400-999-6126

✉ | cn.market@abclonal.com.cn

🌐 | www.abclonal.com.cn

Immunogen Information

Gene ID

8826

Swiss Prot

P46940

Immunogen

Recombinant protein (or fragment). This information is considered to be commercially sensitive.

Synonyms

SAR1; p195; HUMORFA01; IQGAP1

Product Information

Source

Rabbit

Isotype

IgG

Purification

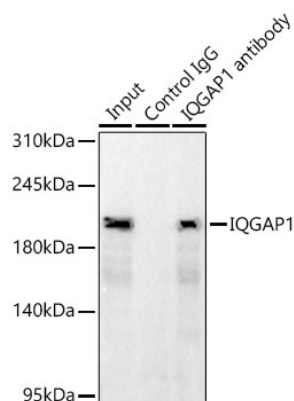
Affinity purification

Storage

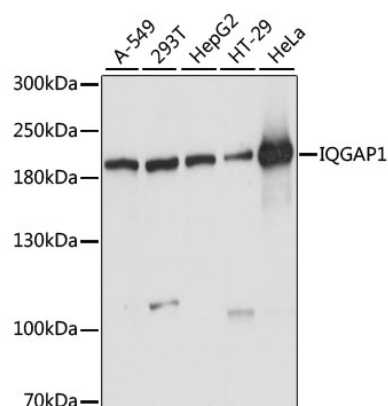
Store at -20°C. Avoid freeze / thaw cycles.

Buffer: PBS with 0.02% Sodium azide, 50% glycerol, pH7.3.

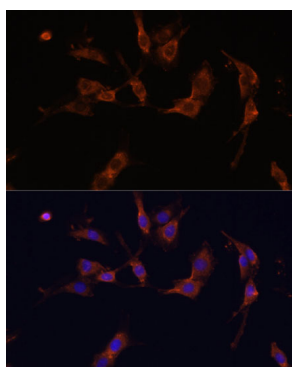
Validation Data



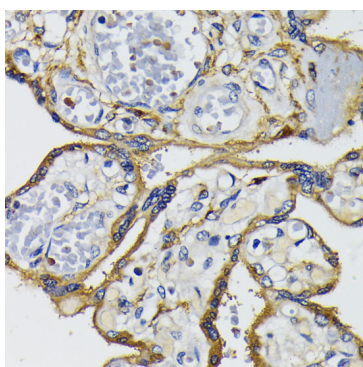
Immunoprecipitation of IQGAP1 in 300 µg extracts from 293F cells using 3 µg IQGAP1 Rabbit pAb (A5679). Western blot analysis was performed using IQGAP1 Rabbit pAb (A5679) at 1:500 dilution.



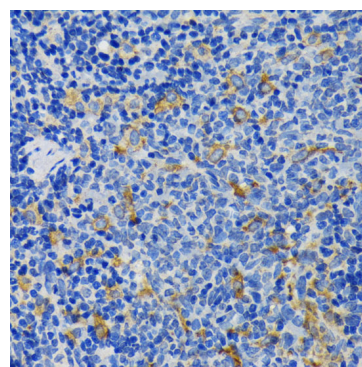
Western blot analysis of various lysates using IQGAP1 Rabbit pAb (A5679) at 1:1000 dilution. Secondary antibody: HRP-conjugated Goat anti-Rabbit IgG (H+L) (AS014) at 1:10000 dilution. Lysates/proteins: 25µg per lane. Blocking buffer: 3% nonfat dry milk in TBST. Detection: ECL Basic Kit (RM00020). Exposure time: 10s.



Immunofluorescence analysis of C6 cells using IQGAP1 Rabbit pAb (A5679) at dilution of 1:100 (40x lens). Secondary antibody: Cy3-conjugated Goat anti-Rabbit IgG (H+L) (AS007) at 1:500 dilution. Blue: DAPI for nuclear staining.

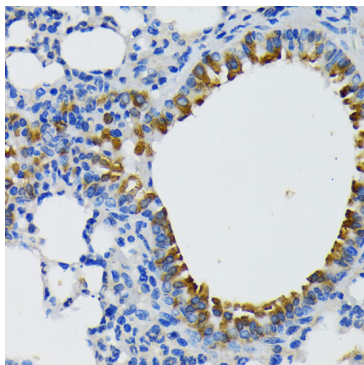


Immunohistochemistry analysis of paraffin-embedded Human placenta using IQGAP1 Rabbit pAb (A5679) at dilution of 1:200 (40x lens). Microwave antigen retrieval performed with 0.01M PBS Buffer (pH 7.2) prior to IHC staining.



Immunohistochemistry analysis of paraffin-embedded Rat spleen using IQGAP1 Rabbit pAb (A5679) at dilution of 1:200 (40x lens). Microwave antigen retrieval performed with 0.01M PBS Buffer (pH 7.2) prior to IHC staining.

Validation Data



Immunohistochemistry analysis of paraffin-embedded Mouse lung using IQGAP1 Rabbit pAb (A5679) at dilution of 1:200 (40x lens). Microwave antigen retrieval performed with 0.01M PBS Buffer (pH 7.2) prior to IHC staining.