

SH3GL2 Rabbit pAb

Catalog No.: A5701 **1 Publications**

Basic Information

Observed MW

38kDa/40kDa

Calculated MW

40kDa

Category

Primary antibody

Applications

WB, IF/ICC, ELISA

Cross-Reactivity

Human, Mouse

Background

Enables identical protein binding activity. Involved in negative regulation of blood-brain barrier permeability; negative regulation of gene expression; and negative regulation of protein phosphorylation. Located in perinuclear region of cytoplasm.

Recommended Dilutions

WB 1:500 - 1:2000

IF/ICC 1:50 - 1:200

ELISA Recommended starting concentration is 1 µg/mL. Please optimize the concentration based on your specific assay requirements.

Immunogen Information

Gene ID

6456

Swiss Prot

Q99962

Immunogen

Recombinant protein (or fragment). This information is considered to be commercially sensitive.

Synonyms

CNSA2; SH3P4; EEN-B1; SH3D2A; SH3GL2

Contact

 | 400-999-6126

 | cn.market@abclonal.com.cn

 | www.abclonal.com.cn

Product Information

Source

Rabbit

Isotype

IgG

Purification

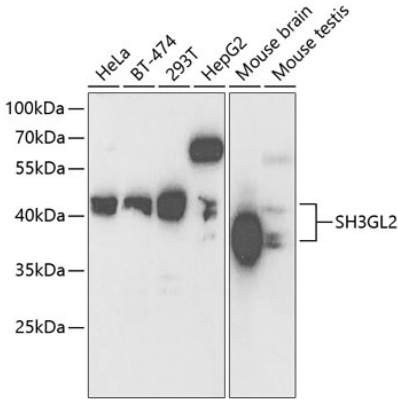
Affinity purification

Storage

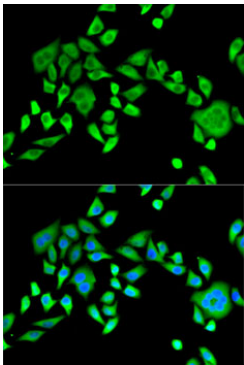
Store at -20°C. Avoid freeze / thaw cycles.

Buffer: PBS with 0.02% sodium azide, 50% glycerol, pH 7.3.

Validation Data



Western blot analysis of various lysates using SH3GL2 Rabbit pAb (A5701) at 1:1000 dilution.
Secondary antibody: HRP-conjugated Goat anti-Rabbit IgG (H+L) (AS014) at 1:10000 dilution.
Lysates/proteins: 25µg per lane.
Blocking buffer: 3% nonfat dry milk in TBST.
Detection: ECL Basic Kit (RM00020).
Exposure time: 90s.



Immunofluorescence analysis of HeLa cells using SH3GL2 Rabbit pAb (A5701).
Secondary antibody: Cy3-conjugated Goat anti-Rabbit IgG (H+L) (AS007) at 1:500 dilution. Blue: DAPI for nuclear staining.