

NPRL2 Rabbit pAb

Catalog No.: A5859

Basic Information

Observed MW

40kDa

Calculated MW

44kDa

Category

Primary antibody

Applications

WB, IF/ICC, ELISA

Cross-Reactivity

Human, Mouse, Rat

Background

Enables protein kinase activity. Contributes to GTPase activator activity. Involved in cellular response to amino acid starvation; negative regulation of TOR signaling; and negative regulation of kinase activity. Located in lysosomal membrane. Part of GATOR1 complex. Implicated in focal epilepsy.

Recommended Dilutions

WB 1:500 - 1:2000

IF/ICC 1:50 - 1:200

ELISA Recommended starting concentration is 1 µg/mL. Please optimize the concentration based on your specific assay requirements.

Immunogen Information

Gene ID

10641

Swiss Prot

Q8WTW4

Immunogen

Recombinant protein (or fragment). This information is considered to be commercially sensitive.

Synonyms

NPR2; NPR2L; TUSC4; FFEVF2; NPRL2

Contact

☎ | 400-999-6126

✉ | cn.market@abclonal.com.cn

🌐 | www.abclonal.com.cn

Product Information

Source

Rabbit

Isotype

IgG

Purification

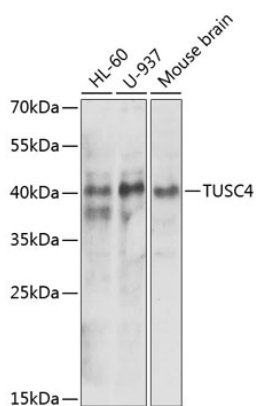
Affinity purification

Storage

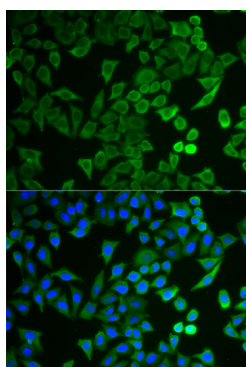
Store at -20°C. Avoid freeze / thaw cycles.

Buffer: PBS with 0.02% sodium azide, 50% glycerol, pH7.3.

Validation Data



Western blot analysis of various lysates using NPRL2 Rabbit pAb (A5859) at 1:1000 dilution.
Secondary antibody: HRP-conjugated Goat anti-Rabbit IgG (H+L) (AS014) at 1:10000 dilution.
Lysates/proteins: 25µg per lane.
Blocking buffer: 3% nonfat dry milk in TBST.
Detection: ECL Enhanced Kit (RM00021).
Exposure time: 90s.



Immunofluorescence analysis of HeLa cells using NPRL2 Rabbit pAb (A5859). Secondary antibody: Cy3-conjugated Goat anti-Rabbit IgG (H+L) (AS007) at 1:500 dilution. Blue: DAPI for nuclear staining.