

PERP Rabbit mAb

Catalog No.: A5937

Recombinant

2 Publications

Basic Information

Observed MW

21kDa

Calculated MW

21kDa

Category

Primary antibody

Applications

WB, IHC-P, IF/ICC, ELISA

Cross-Reactivity

Human, Mouse, Rat

CloneNo number

ARC2094

Background

Involved in activation of cysteine-type endopeptidase activity. Predicted to be located in plasma membrane. Predicted to be active in cell-cell junction. Implicated in erythrokeratoderma variabilis and mutilating palmoplantar keratoderma with periorificial keratotic plaques.

Recommended Dilutions

WB 1:1000 - 1:6000

IHC-P 1:50 - 1:200

IF/ICC 1:100 - 1:400

ELISA Recommended starting concentration is 1 µg/mL. Please optimize the concentration based on your specific assay requirements.

Immunogen Information

Gene ID

64065

Swiss Prot

Q96FX8

Immunogen

Synthetic peptide. This information is considered to be commercially sensitive.

Synonyms

THW; KCP1; EKVP7; OLMS2; PIGPC1; KRTCAP1; dJ496H19.1; PERP

Contact

☎ | 400-999-6126

✉ | cn.market@abclonal.com.cn

🌐 | www.abclonal.com.cn

Product Information

Source

Rabbit

Isotype

IgG

Purification

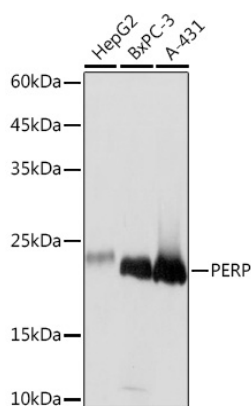
Affinity purification

Storage

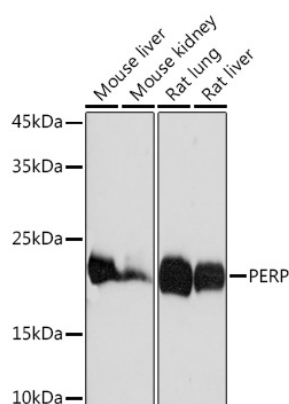
Store at -20°C. Avoid freeze / thaw cycles.

Buffer: PBS with 0.02% sodium azide, 0.05% BSA, 50% glycerol, pH7.3.

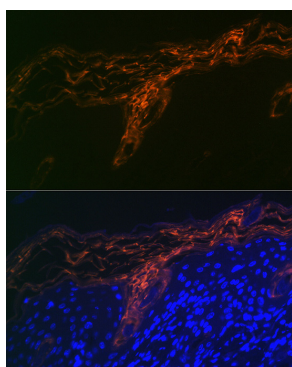
Validation Data



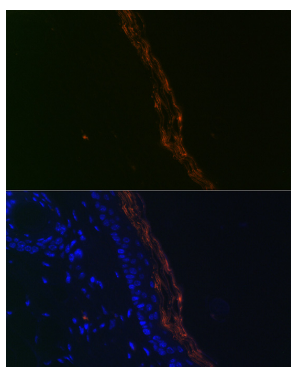
Western blot analysis of various lysates using PERP Rabbit mAb (A5937) at 1:1000 dilution.
Secondary antibody: HRP-conjugated Goat anti-Rabbit IgG (H+L) (AS014) at 1:10000 dilution.
Lysates/proteins: 25µg per lane.
Blocking buffer: 3% nonfat dry milk in TBST.
Detection: ECL Basic Kit (RM00020).
Exposure time: 1s.



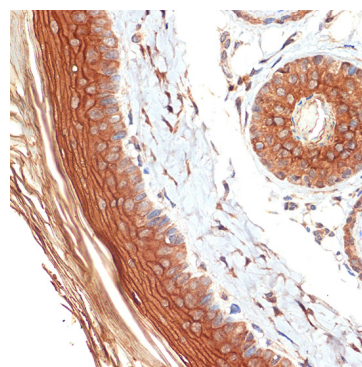
Western blot analysis of various lysates using PERP Rabbit mAb (A5937) at 1:1000 dilution.
Secondary antibody: HRP-conjugated Goat anti-Rabbit IgG (H+L) (AS014) at 1:10000 dilution.
Lysates/proteins: 25µg per lane.
Blocking buffer: 3% nonfat dry milk in TBST.
Detection: ECL Basic Kit (RM00020).
Exposure time: 1s.



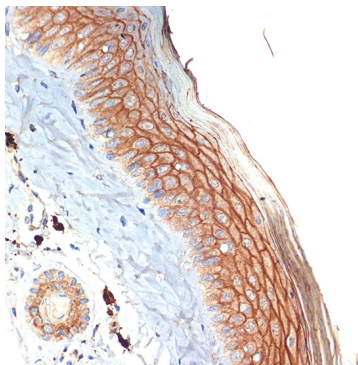
Immunofluorescence analysis of paraffin-embedded human skin using PERP Rabbit mAb (A5937) at dilution of 1:100 (40x lens).
Secondary antibody: Cy3-conjugated Goat anti-Rabbit IgG (H+L) (AS007) at 1:500 dilution. Blue: DAPI for nuclear staining.



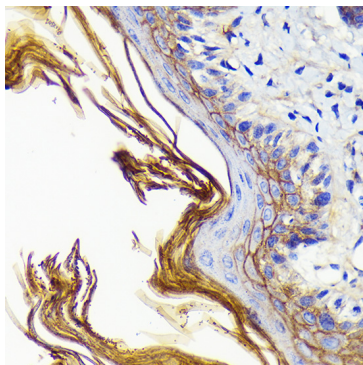
Immunofluorescence analysis of paraffin-embedded mouse skin using PERP Rabbit mAb (A5937) at dilution of 1:100 (40x lens).
Secondary antibody: Cy3-conjugated Goat anti-Rabbit IgG (H+L) (AS007) at 1:500 dilution. Blue: DAPI for nuclear staining.



Immunohistochemistry analysis of paraffin-embedded Rat skin using PERP Rabbit mAb (A5937) at dilution of 1:100 (40x lens).
Microwave antigen retrieval performed with 0.01M Tris/EDTA Buffer (pH 9.0) prior to IHC staining.



Immunohistochemistry analysis of paraffin-embedded Mouse skin using PERP Rabbit mAb (A5937) at dilution of 1:100 (40x lens). Microwave antigen retrieval performed with 0.01M Tris/EDTA Buffer (pH 9.0) prior to IHC staining.



Immunohistochemistry analysis of paraffin-embedded Human skin tissue using PERP Rabbit mAb (A5937) at a dilution of 1:100 (40x lens). High pressure antigen retrieval performed with 0.01M Tris-EDTA Buffer (pH 9.0) prior to IHC staining.