

Pyruvate carboxylase (PC) Rabbit pAb

Catalog No.: A6301

Basic Information

Observed MW

130kDa

Calculated MW

130kDa

Category

Primary antibody

Applications

WB, IF/ICC, IP, ELISA

Cross-Reactivity

Human, Mouse, Rat

Background

This gene encodes pyruvate carboxylase, which requires biotin and ATP to catalyse the carboxylation of pyruvate to oxaloacetate. The active enzyme is a homotetramer arranged in a tetrahedron which is located exclusively in the mitochondrial matrix. Pyruvate carboxylase is involved in gluconeogenesis, lipogenesis, insulin secretion and synthesis of the neurotransmitter glutamate. Mutations in this gene have been associated with pyruvate carboxylase deficiency. Alternatively spliced transcript variants with different 5' UTRs, but encoding the same protein, have been found for this gene.

Recommended Dilutions

WB 1:500 - 1:1000**IF/ICC** 1:10 - 1:100**IP** 0.5µg-4µg antibody for
200µg-400µg extracts of
whole cells**ELISA** Recommended starting
concentration is 1 µg/mL.
Please optimize the
concentration based on
your specific assay
requirements.

Contact

 | 400-999-6126 | cn.market@abclonal.com.cn | www.abclonal.com.cn

Immunogen Information

Gene ID

5091

Swiss Prot

P11498

Immunogen

Recombinant protein (or fragment). This information is considered to be commercially sensitive.

Synonyms

PCB; Pyruvate carboxylase (PC)

Product Information

Source

Rabbit

Isotype

IgG

Purification

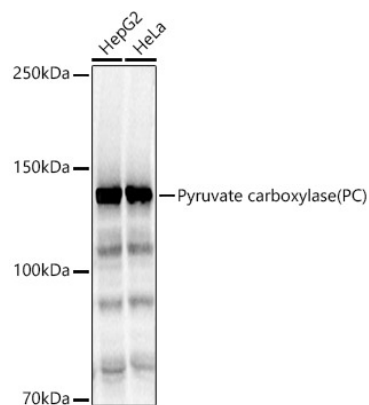
Affinity purification

Storage

Store at -20°C. Avoid freeze / thaw cycles.

Buffer: PBS with 0.02% sodium azide, 50% glycerol, pH 7.3.

Validation Data



Western blot analysis of various lysates, using Pyruvate carboxylase (PC) Rabbit pAb (A6301) at 1:1000 dilution.

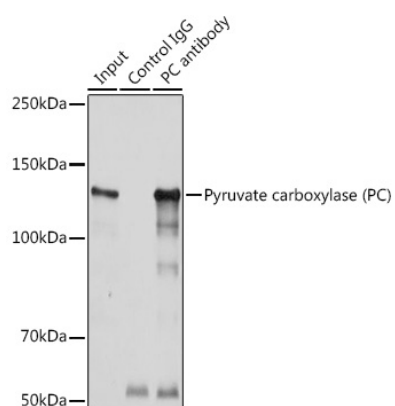
Secondary antibody: HRP-conjugated Goat anti-Rabbit IgG (H+L) (AS014) at 1:10000 dilution.

Lysates/proteins: 25µg per lane.

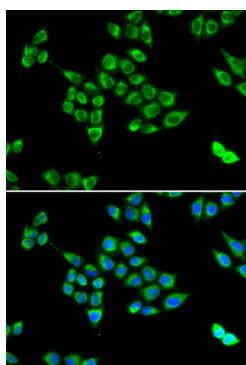
Blocking buffer: 3% nonfat dry milk in TBST.

Detection: ECL Basic Kit (RM00020).

Exposure time: 3s.



Immunoprecipitation analysis of 300 µg extracts of HeLa cells using 3 µg Pyruvate carboxylase (Pyruvate carboxylase (PC)) antibody (A6301). Western blot was performed from the immunoprecipitate using Pyruvate carboxylase (Pyruvate carboxylase (PC)) antibody (A6301) at a dilution of 1:1000.



Immunofluorescence analysis of U2OS cells using Pyruvate carboxylase (PC) Rabbit pAb (A6301). Secondary antibody: Cy3-conjugated Goat anti-Rabbit IgG (H+L) (AS007) at 1:500 dilution. Blue: DAPI for nuclear staining.