

# $\alpha$ -Tubulin Rabbit mAb

Catalog No.: A6830

Recombinant

25 Publications

## Basic Information

### Observed MW

55 kDa

### Calculated MW

50 kDa

### Category

Primary antibody

### Applications

WB, IHC-P, IF/ICC, IP, ELISA

### Cross-Reactivity

Human, Mouse, Rat

### CloneNo number

ARC2486

## Background

Microtubules of the eukaryotic cytoskeleton perform essential and diverse functions and are composed of a heterodimer of alpha and beta tubulin. The genes encoding these microtubule constituents are part of the tubulin superfamily, which is composed of six distinct families. Genes from the alpha, beta and gamma tubulin families are found in all eukaryotes. The alpha and beta tubulins represent the major components of microtubules, while gamma tubulin plays a critical role in the nucleation of microtubule assembly. There are multiple alpha and beta tubulin genes and they are highly conserved among and between species. This gene encodes an alpha tubulin that is a highly conserved homolog of a rat testis-specific alpha tubulin. Alternatively spliced transcript variants encoding different isoforms have been found for this gene.

## Recommended Dilutions

**WB** 1:10000 - 1:20000**IHC-P** 1:200 - 1:2000**IF/ICC** 1:100 - 1:800**IP** 0.5 $\mu$ g-4 $\mu$ g antibody for  
200 $\mu$ g-400 $\mu$ g extracts of  
whole cells**ELISA** Recommended starting  
concentration is 1  $\mu$ g/mL.  
Please optimize the  
concentration based on  
your specific assay  
requirements.

## Contact

 | 400-999-6126 | [cn.market@abclonal.com.cn](mailto:cn.market@abclonal.com.cn) | [www.abclonal.com.cn](http://www.abclonal.com.cn)

## Immunogen Information

### Gene ID

7277

### Swiss Prot

P68366

### Immunogen

Synthetic peptide. This information is considered to be commercially sensitive.

### Synonyms

ALS22; TUBA1; H2-ALPHA;  $\alpha$ -Tubulin

## Product Information

### Source

Rabbit

### Isotype

IgG

### Purification

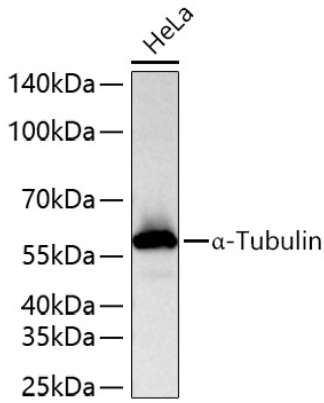
Affinity purification

### Storage

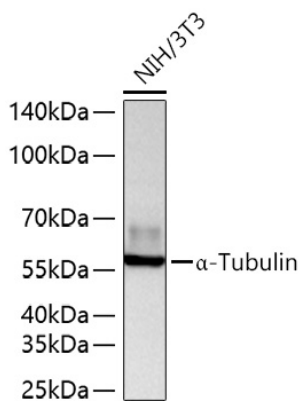
Store at -20°C. Avoid freeze / thaw cycles.

Buffer: PBS containing 50% glycerol and 0.05% BSA, preserved with proclin300 or sodium azide (as specified on the Certificate of Analysis), pH 7.3.

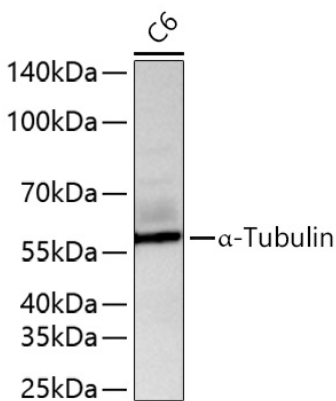
## Validation Data



Western blot analysis of lysates from HeLa cells using  $\alpha$ -Tubulin Rabbit mAb (A6830) at 1:10000 dilution incubated overnight at 4°C.  
Secondary antibody: HRP-conjugated Goat anti-Rabbit IgG (H+L) (AS014) at 1:10000 dilution.  
Lysates/proteins: 25  $\mu$ g per lane.  
Blocking buffer: 3% nonfat dry milk in TBST.  
Detection: ECL Basic Kit (RM00020).  
Exposure time: 10 s.

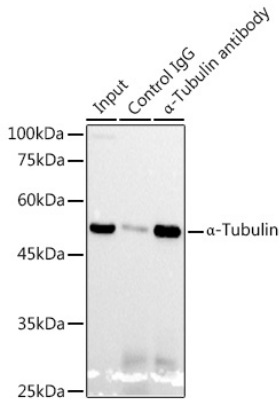


Western blot analysis of lysates from NIH/3T3 cells using  $\alpha$ -Tubulin Rabbit mAb (A6830) at 1:10000 dilution incubated overnight at 4°C.  
Secondary antibody: HRP-conjugated Goat anti-Rabbit IgG (H+L) (AS014) at 1:10000 dilution.  
Lysates/proteins: 25  $\mu$ g per lane.  
Blocking buffer: 3% nonfat dry milk in TBST.  
Detection: ECL Basic Kit (RM00020).  
Exposure time: 20 s.

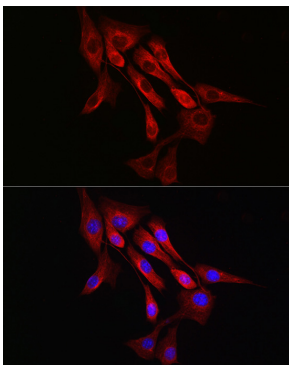


Western blot analysis of lysates from C6 cells using  $\alpha$ -Tubulin Rabbit mAb (A6830) at 1:10000 dilution incubated overnight at 4°C.  
Secondary antibody: HRP-conjugated Goat anti-Rabbit IgG (H+L) (AS014) at 1:10000 dilution.  
Lysates/proteins: 25  $\mu$ g per lane.  
Blocking buffer: 3% nonfat dry milk in TBST.  
Detection: ECL Basic Kit (RM00020).  
Exposure time: 45 s.

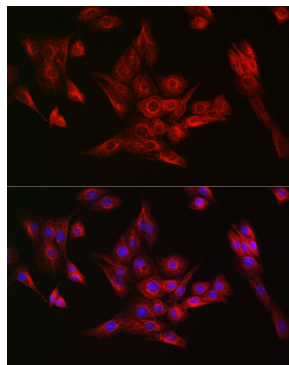
## Validation Data



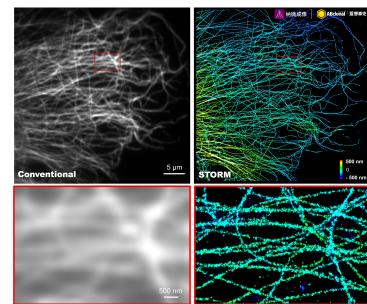
Immunoprecipitation analysis of 300 µg extracts from HeLa cells using 3 µg α-Tubulin Rabbit mAb (A6830). Western blot was performed from the immunoprecipitate using α-Tubulin Rabbit mAb (A6830) at a dilution of 1:1000.



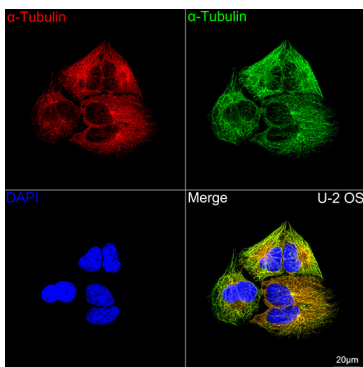
Immunofluorescence analysis of NIH/3T3 cells using α-Tubulin Rabbit mAb (A6830) at dilution of 1:100 (40x lens). Secondary antibody: Cy3-conjugated Goat anti-Rabbit IgG (H+L) (AS007) at 1:500 dilution. Blue: DAPI for nuclear staining.



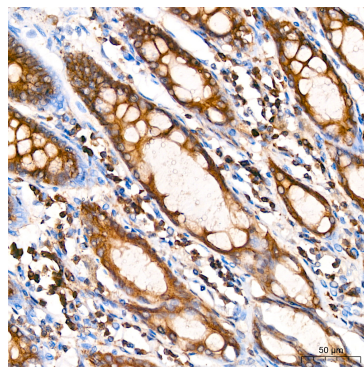
Immunofluorescence analysis of PC-12 cells using α-Tubulin Rabbit mAb (A6830) at dilution of 1:100 (40x lens). Secondary antibody: Cy3-conjugated Goat anti-Rabbit IgG (H+L) (AS007) at 1:500 dilution. Blue: DAPI for nuclear staining.



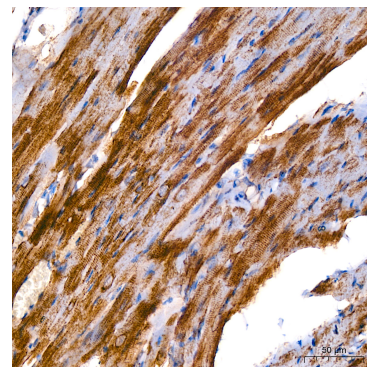
The STORM super-resolution (SR) imaging of COS7 cells using α-Tubulin Rabbit mAb (A6830, ABclonal) at dilution of 1:50 with 3% paraformaldehyde (PFA) +0.1% glutaraldehyde (GA) fixation. The immunostaining was performed by Full Automatic Immunofluorescence Workflow System (Workflow Ultra300, Nano-Micro imaging, China). Image was performed with Single-Molecule Localization Super-Resolution Microscopy (STORM Ultra300, Nano-Micro imaging, China). We acknowledge Nano-Micro imaging Biotechnology Co., Ltd. (XXXXXXXXXXXXXXXXXX) in SR image processing and kindly providing this image.



Confocal imaging of U-2 OS cells using α-Tubulin Rabbit mAb (A6830, dilution 1:200) followed by a further incubation with Cy3 Goat Anti-Rabbit IgG (H+L) (AS007, dilution



Immunohistochemistry analysis of paraffin-embedded Human colon using α-Tubulin Rabbit mAb (A6830) at dilution of 1:200 (40x lens). High pressure antigen retrieval



Immunohistochemistry analysis of paraffin-embedded Mouse heart using α-Tubulin Rabbit mAb (A6830) at dilution of 1:200 (40x lens). High pressure antigen retrieval

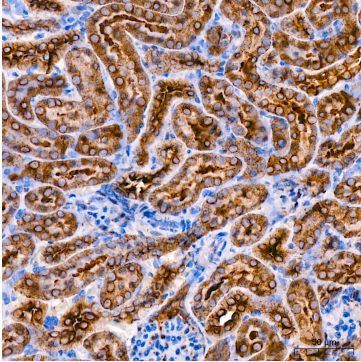
## Validation Data

---

1:500) (Red). The cells were counterstained with  $\alpha$ -Tubulin Mouse mAb (AC012, dilution 1:400) followed by incubation with ABflo® 488-conjugated Goat Anti-Mouse IgG (H+L) Ab (AS076, dilution 1:500) (Green). DAPI was used for nuclear staining (Blue). Objective: 100x.

performed with 0.01M Citrate buffer (pH 6.0) prior to IHC staining.

performed with 0.01M Citrate buffer (pH 6.0) prior to IHC staining.



Immunohistochemistry analysis of paraffin-embedded Mouse kidney using  $\alpha$ -Tubulin Rabbit mAb (A6830) at dilution of 1:200 (40x lens). High pressure antigen retrieval performed with 0.01M Citrate buffer (pH 6.0) prior to IHC staining.