

SMYD4 Rabbit pAb

Catalog No.: A7310

Basic Information

Observed MW

89kDa

Calculated MW

89kDa

Category

Primary antibody

Applications

WB, IHC-P, IF/ICC, IP, ELISA

Cross-Reactivity

Human, Mouse, Rat

Background

Predicted to enable metal ion binding activity and methyltransferase activity. Involved in heart development. Predicted to be located in cytoplasm and nucleus.

Recommended Dilutions

WB 1:1000 - 1:5000

IHC-P 1:50 - 1:200

IF/ICC 1:50 - 1:100

IP 0.5µg-4µg antibody for
200µg-400µg extracts of
whole cells

ELISA Recommended starting
concentration is 1 µg/mL.
Please optimize the
concentration based on
your specific assay
requirements.

Immunogen Information

Gene ID

114826

Swiss Prot

Q8IYR2

Immunogen

Recombinant protein (or fragment). This information is considered to be commercially sensitive.

Synonyms

ZMYND21; SMYD4

Product Information

Source

Rabbit

Isotype

IgG

Purification

Affinity purification

Storage

Store at -20°C. Avoid freeze / thaw cycles.

Buffer: PBS containing 50% glycerol, preserved with proclin300 or sodium azide (as specified on the Certificate of Analysis), pH 7.3.

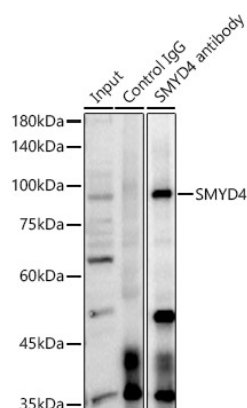
Contact

 | 400-999-6126

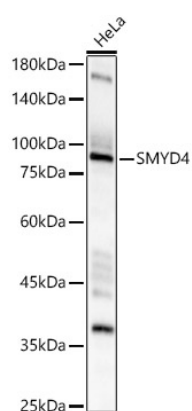
 | cn.market@abclonal.com.cn

 | www.abclonal.com.cn

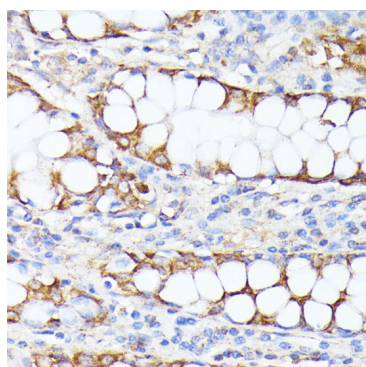
Validation Data



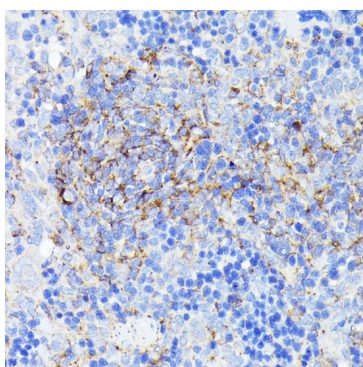
Immunoprecipitation analysis of 300ug extracts of HeLa cells using 3ug SMYD4 Rabbit pAb (A7310 1:2000). Western blot was performed from the immunoprecipitate using SMYD4 Rabbit pAb (A7310) at a dilution of 1:1000.



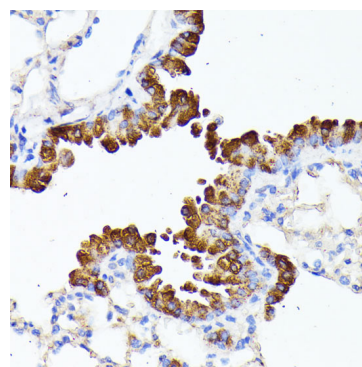
Western blot analysis of lysates from HeLa cells, using SMYD4 Rabbit pAb (A7310) at 1:2000 dilution. Secondary antibody: HRP-conjugated Goat anti-Rabbit IgG (H+L) (AS014) at 1:10000 dilution. Lysates/proteins: 25µg per lane. Blocking buffer: 3% nonfat dry milk in TBST. Detection: ECL Basic Kit (RM00020). Exposure time: 60s.



Immunohistochemistry analysis of paraffin-embedded Human colon carcinoma using SMYD4 Rabbit pAb (A7310) at dilution of 1:100 (40x lens). Microwave antigen retrieval performed with 0.01M PBS Buffer (pH 7.2) prior to IHC staining.

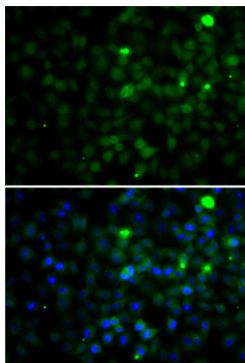


Immunohistochemistry analysis of paraffin-embedded Rat spleen using SMYD4 Rabbit pAb (A7310) at dilution of 1:100 (40x lens). Microwave antigen retrieval performed with 0.01M PBS Buffer (pH 7.2) prior to IHC staining.



Immunohistochemistry analysis of paraffin-embedded Mouse lung using SMYD4 Rabbit pAb (A7310) at dilution of 1:100 (40x lens). Microwave antigen retrieval performed with 0.01M PBS Buffer (pH 7.2) prior to IHC staining.

Validation Data



Immunofluorescence analysis of A-549 cells using SMYD4 Rabbit pAb (A7310). Secondary antibody: Cy3-conjugated Goat anti-Rabbit IgG (H+L) (AS007) at 1:500 dilution. Blue: DAPI for nuclear staining.