

BLOC1S2 Rabbit pAb

Catalog No.: A8007

1 Publications

Basic Information

Observed MW

16kDa

Calculated MW

16kDa

Category

Primary antibody

Applications

WB, ELISA

Cross-Reactivity

Human, Mouse, Rat

Background

This gene encodes a protein with multiple functions. The encoded protein has been found in association with the centrosome, shown to co-localize with gamma-tubulin, and also found to be one of the proteins in the BLOC-1 complex which functions in the formation of lysosome-related organelles. A pseudogene of this gene is located on the X chromosome. Alternative splicing results in multiple transcript variants.

Recommended Dilutions

WB 1:500 - 1:2000

ELISA Recommended starting concentration is 1 µg/mL. Please optimize the concentration based on your specific assay requirements.

Immunogen Information

Gene ID

282991

Swiss Prot

Q6QNY1

Immunogen

Recombinant protein (or fragment). This information is considered to be commercially sensitive.

Synonyms

CEAP; BLOS2; BORCS2; CEAP11; BLOC1S2

Contact

☎ | 400-999-6126

✉ | cn.market@abclonal.com.cn

🌐 | www.abclonal.com.cn

Product Information

Source

Rabbit

Isotype

IgG

Purification

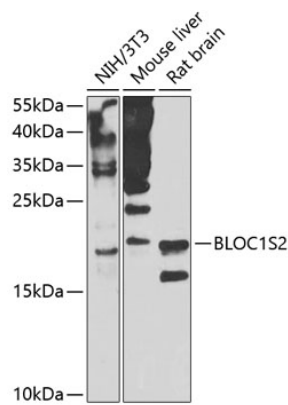
Affinity purification

Storage

Store at -20°C. Avoid freeze / thaw cycles.

Buffer: PBS with 0.02% sodium azide, 50% glycerol, pH7.3.

Validation Data



Western blot analysis of various lysates using BLOC1S2 Rabbit pAb (A8007) at 1:1000 dilution. Secondary antibody: HRP-conjugated Goat anti-Rabbit IgG (H+L) (A5014) at 1:10000 dilution. Lysates/proteins: 25µg per lane. Blocking buffer: 3% nonfat dry milk in TBST. Detection: ECL Enhanced Kit (RM00021). Exposure time: 30s.