

ABCC8 Rabbit pAb

Catalog No.: A8456

Basic Information

Observed MW

177kDa

Calculated MW

177kDa

Category

Primary antibody

Applications

WB, ELISA

Cross-Reactivity

Mouse

Background

The protein encoded by this gene is a member of the superfamily of ATP-binding cassette (ABC) transporters. ABC proteins transport various molecules across extra- and intra-cellular membranes. ABC genes are divided into seven distinct subfamilies (ABC1, MDR/TAP, MRP, ALD, OABP, GCN20, White). This protein is a member of the MRP subfamily which is involved in multi-drug resistance. This protein functions as a modulator of ATP-sensitive potassium channels and insulin release. Mutations in the ABCC8 gene and deficiencies in the encoded protein have been observed in patients with hyperinsulinemic hypoglycemia of infancy, an autosomal recessive disorder of unregulated and high insulin secretion. Mutations have also been associated with non-insulin-dependent diabetes mellitus type II, an autosomal dominant disease of defective insulin secretion. Alternatively spliced transcript variants have been found for this gene.

Recommended Dilutions

WB 1:500 - 1:2000**ELISA** Recommended starting concentration is 1 µg/mL. Please optimize the concentration based on your specific assay requirements.

Immunogen Information

Gene ID

6833

Swiss Prot

Q09428

Immunogen

Recombinant protein (or fragment). This information is considered to be commercially sensitive.

Synonyms

HI; SUR; HHF1; MRP8; PHH1; SUR1; ABC36; HRINS; PNDM3; TNDM2; SUR1delta2; ABCC8

Contact

 | 400-999-6126 | cn.market@abclonal.com.cn | www.abclonal.com.cn

Product Information

Source

Rabbit

Isotype

IgG

Purification

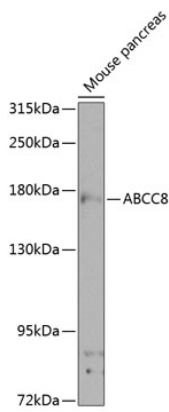
Affinity purification

Storage

Store at -20°C. Avoid freeze / thaw cycles.

Buffer: PBS with 0.02% sodium azide, 50% glycerol, pH7.3.

Validation Data



Western blot analysis of lysates from mouse pancreas, using ABCC8 Rabbit pAb (A8456) at 1:1000 dilution.
Secondary antibody: HRP-conjugated Goat anti-Rabbit IgG (H+L) (AS014) at 1:10000 dilution.
Lysates/proteins: 25µg per lane.
Blocking buffer: 3% nonfat dry milk in TBST.
Detection: ECL Basic Kit (RM00020).
Exposure time: 60s.