

IL1 β Rabbit mAb

Catalog No.: A9440

Recombinant

1 Publications

Basic Information

Observed MW

19kDa/31kDa

Calculated MW

31kDa

Category

Primary antibody

Applications

WB,ELISA

Cross-Reactivity

Mouse

CloneNo number

ARC2727

Background

The protein encoded by this gene is a member of the interleukin 1 cytokine family. This cytokine is produced by activated macrophages as a proprotein, which is proteolytically processed to its active form by caspase 1. The encoded protein plays a role in thymocyte proliferation and is involved in the inflammatory response.

Recommended Dilutions

WB 1:500 - 1:1000

ELISA Recommended starting concentration is 1 μ g/mL. Please optimize the concentration based on your specific assay requirements.

Immunogen Information

Gene ID

16176

Swiss Prot

P10749

Immunogen

Recombinant protein (or fragment). This information is considered to be commercially sensitive.

Synonyms

IL-1b; IL-1beta; IL1 β

Contact

☎ | 400-999-6126

✉ | cn.market@abclonal.com.cn

🌐 | www.abclonal.com.cn

Product Information

Source

Rabbit

Isotype

IgG

Purification

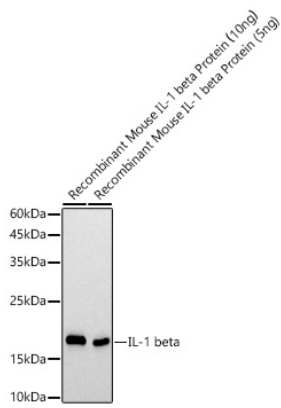
Affinity purification

Storage

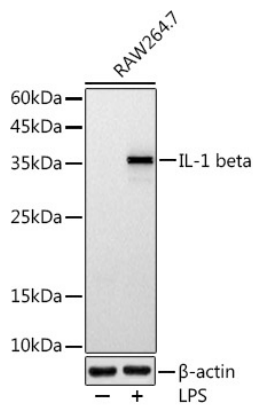
Store at -20°C. Avoid freeze / thaw cycles.

Buffer: PBS with 0.02% sodium azide, 0.05% BSA, 50% glycerol, pH7.3.

Validation Data



Western blot analysis of recombinant Mouse IL1 β Protein, using IL1 β Rabbit mAb (A9440) at 1:1000 dilution.
Secondary antibody: HRP-conjugated Goat anti-Rabbit IgG (H+L) (AS014) at 1:10000 dilution.
Lysates/proteins: 10ng/5ng per lane.
Blocking buffer: 3% nonfat dry milk in TBST.
Detection: ECL Basic Kit (RM00020).
Exposure time: 1s.



Western blot analysis of lysates from RAW264.7 cells, using IL1 β Rabbit mAb (A9440) at 1:1000 dilution.
Raw264. 7 cells were treated with LPS (1 μ g/ml) at 37°C for 8 hours.
Secondary antibody: HRP-conjugated Goat anti-Rabbit IgG (H+L) (AS014) at 1:10000 dilution.
Lysates/proteins: 25 μ g per lane.
Blocking buffer: 3% nonfat dry milk in TBST.
Detection: ECL Basic Kit (RM00020).
Exposure time: 180s.