

DEPDC6 Rabbit pAb

Catalog No.: A9447 **4 Publications**

Basic Information

Observed MW

48kDa

Calculated MW

46kDa

Category

Primary antibody

Applications

WB, ELISA

Cross-Reactivity

Human, Mouse

Background

Involved in several processes, including negative regulation of TOR signaling; negative regulation of cell size; and negative regulation of protein kinase activity.

Recommended Dilutions

WB 1:500 - 1:2000

ELISA Recommended starting concentration is 1 µg/mL. Please optimize the concentration based on your specific assay requirements.

Immunogen Information

Gene ID

64798

Swiss Prot

Q8TB45

Immunogen

Recombinant protein (or fragment). This information is considered to be commercially sensitive.

Synonyms

DEP.6; DEPDC6

Contact

 | 400-999-6126

 | cn.market@abclonal.com.cn

 | www.abclonal.com.cn

Product Information

Source

Rabbit

Isotype

IgG

Purification

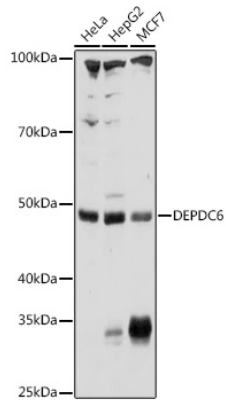
Affinity purification

Storage

Store at -20°C. Avoid freeze / thaw cycles.

Buffer: PBS with 0.01% thimerosal, 50% glycerol, pH7.3.

Validation Data



Western blot analysis of various lysates using DEPDC6 Rabbit pAb (A9447) at 1:1000 dilution. Secondary antibody: HRP-conjugated Goat anti-Rabbit IgG (H+L) (AS014) at 1:10000 dilution. Lysates/proteins: 25µg per lane. Blocking buffer: 3% nonfat dry milk in TBST. Detection: ECL Basic Kit (RM00020). Exposure time: 60s.