

Phospho-MEK6-S207 Rabbit pAb

Catalog No.: AP0393

Basic Information

Observed MW

43kDa

Calculated MW

37kDa

Category

Primary antibody

Applications

WB,IF/ICC

Cross-Reactivity

Human, Rat

Background

This gene encodes a member of the dual specificity protein kinase family, which functions as a mitogen-activated protein (MAP) kinase kinase. MAP kinases, also known as extracellular signal-regulated kinases (ERKs), act as an integration point for multiple biochemical signals. This protein phosphorylates and activates p38 MAP kinase in response to inflammatory cytokines or environmental stress. As an essential component of p38 MAP kinase mediated signal transduction pathway, this gene is involved in many cellular processes such as stress induced cell cycle arrest, transcription activation and apoptosis.

Recommended Dilutions

WB 1:500 - 1:1000

IF/ICC 1:50 - 1:200

Immunogen Information

Gene ID

5608

Swiss Prot

P52564

Immunogen

Synthetic peptide. This information is considered to be commercially sensitive.

Synonyms

MEK6; MKK6; MAPKK6; PRKMK6; SAPKK3; SAPKK-3; Phospho-MEK6-S207

Contact

☎ | 400-999-6126

✉ | cn.market@abclonal.com.cn

🌐 | www.abclonal.com.cn

Product Information

Source

Rabbit

Isotype

IgG

Purification

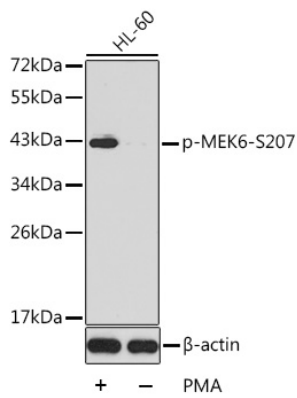
Affinity purification

Storage

Store at -20°C. Avoid freeze / thaw cycles.

Buffer: PBS containing 50% glycerol, preserved with proclin300 or sodium azide (as specified on the Certificate of Analysis), pH 7.3.

Validation Data



Western blot analysis of lysates from HL60 cells, using Phospho-MEK6-S207 Rabbit pAb (AP0393).
Secondary antibody: HRP-conjugated Goat anti-Rabbit IgG (H+L) (AS014) at 1:10000 dilution.
Lysates/proteins: 25 μ g per lane.
Blocking buffer: 3% BSA.