

Phospho-ACLY-S455 Rabbit pAb

Catalog No.: AP0779

1 Publications

Basic Information

Observed MW

125kDa

Calculated MW

121kDa

Category

Primary antibody

Applications

WB, IHC-P, IP, ELISA

Cross-Reactivity

Human, Mouse, Rat

Background

ATP citrate lyase is the primary enzyme responsible for the synthesis of cytosolic acetyl-CoA in many tissues. The enzyme is a tetramer (relative molecular weight approximately 440,000) of apparently identical subunits. It catalyzes the formation of acetyl-CoA and oxaloacetate from citrate and CoA with a concomitant hydrolysis of ATP to ADP and phosphate. The product, acetyl-CoA, serves several important biosynthetic pathways, including lipogenesis and cholesterol synthesis. In nervous tissue, ATP citrate-lyase may be involved in the biosynthesis of acetylcholine. Multiple transcript variants encoding distinct isoforms have been identified for this gene.

Recommended Dilutions

WB 1:100 - 1:500**IHC-P** 1:50 - 1:100**IP** 0.5µg-4µg antibody for
200µg-400µg extracts of
whole cells**ELISA** Recommended starting
concentration is 1 µg/mL.
Please optimize the
concentration based on
your specific assay
requirements.

Immunogen Information

Gene ID

47

Swiss Prot

P53396

Immunogen

Synthetic peptide. This information is considered to be commercially sensitive.

Synonyms

ACL; ATPCL; CLATP; Phospho-ACLY-S455

Contact

 | 400-999-6126 | cn.market@abclonal.com.cn | www.abclonal.com.cn

Product Information

Source

Rabbit

Isotype

IgG

Purification

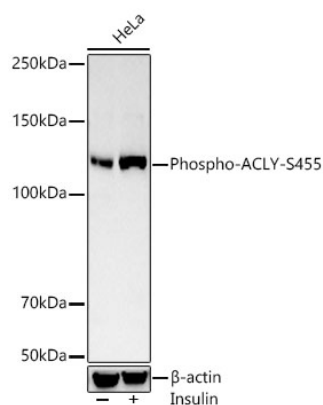
Affinity purification

Storage

Store at -20°C. Avoid freeze / thaw cycles.

Buffer: PBS containing 50% glycerol, preserved with proclin300 or sodium azide (as specified on the Certificate of Analysis), pH 7.3.

Validation Data



Western blot analysis of lysates from HeLa cells using Phospho-ACLY-S455 Rabbit pAb (AP0779) at 1:400 dilution. HeLa cells were treated with Insulin (50 nM) at 37°C for 30 minutes after serum-starvation overnight.

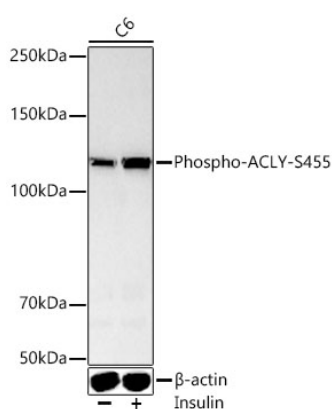
Secondary antibody: HRP-conjugated Goat anti-Rabbit IgG (H+L) (AS014) at 1:10000 dilution.

Lysates/proteins: 25 µg per lane.

Blocking buffer: 3% nonfat dry milk in TBST.

Detection: ECL Basic Kit (RM00020).

Exposure time: 60s.



Western blot analysis of lysates from C6 cells using Phospho-ACLY-S455 Rabbit pAb (AP0779) at 1:400 dilution. C6 cells were treated with Insulin (100 ng/mL) at 37°C for 30 minutes after serum-starvation overnight.

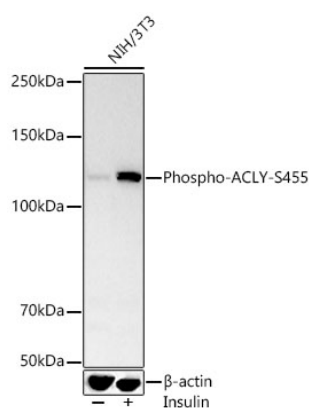
Secondary antibody: HRP-conjugated Goat anti-Rabbit IgG (H+L) (AS014) at 1:10000 dilution.

Lysates/proteins: 25 µg per lane.

Blocking buffer: 3% nonfat dry milk in TBST.

Detection: ECL Basic Kit (RM00020).

Exposure time: 60s.



Western blot analysis of lysates from NIH/3T3 cells using Phospho-ACLY-S455 Rabbit pAb (AP0779) at 1:400 dilution. NIH/3T3 cells were treated with Insulin (200 nM) at 37°C for 30 minutes after serum-starvation overnight.

Secondary antibody: HRP-conjugated Goat anti-Rabbit IgG (H+L) (AS014) at 1:10000 dilution.

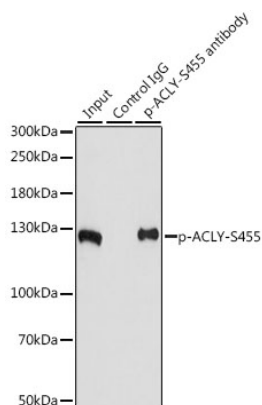
Lysates/proteins: 25 µg per lane.

Blocking buffer: 3% nonfat dry milk in TBST.

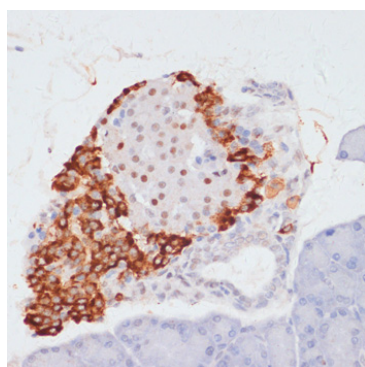
Detection: ECL Basic Kit (RM00020).

Exposure time: 60s.

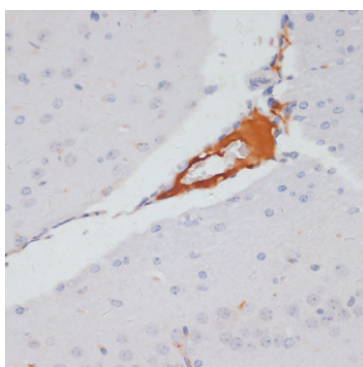
Validation Data



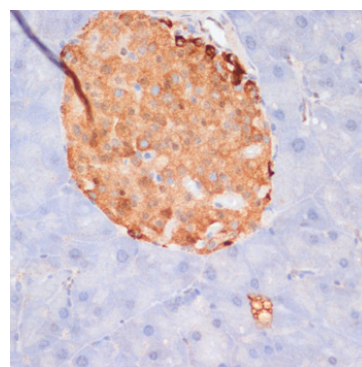
Immunoprecipitation analysis of 200 µg extracts of NIH/3T3 cells, using 3 µg Phospho-ACLY-S455 pAb (AP0779). Western blot was performed from the immunoprecipitate using Phospho-ACLY-S455 pAb (AP0779) at a dilution of 1:1000. NIH/3T3 cells were treated with Insulin (100 nM) at 37°C for 10 minutes after serum-starvation overnight.



Immunohistochemistry analysis of paraffin-embedded Rat pancreas using Phospho-ACLY-S455 Rabbit pAb (AP0779) at dilution of 1:100 (40x lens). Microwave antigen retrieval performed with 0.01M Tris/EDTA Buffer (pH 9.0) prior to IHC staining.



Immunohistochemistry analysis of paraffin-embedded Mouse brain using Phospho-ACLY-S455 Rabbit pAb (AP0779) at dilution of 1:100 (40x lens). Microwave antigen retrieval performed with 0.01M Tris/EDTA Buffer (pH 9.0) prior to IHC staining.



Immunohistochemistry analysis of paraffin-embedded Mouse pancreas using Phospho-ACLY-S455 Rabbit pAb (AP0779) at dilution of 1:100 (40x lens). Microwave antigen retrieval performed with 0.01M Tris/EDTA Buffer (pH 9.0) prior to IHC staining.