

# ABflo® 594 Rabbit anti-Human Phospho-PI3KP85α-Y467+P85β-Y464+P55γ-Y199 mAb

Catalog No.: AP1489

## Basic Information

### Observed MW

### Calculated MW

42-54kDa/81-84kDa

### Category

Primary antibody

### Applications

FC (intra)

### Cross-Reactivity

Human

### CloneNo number

ARC65199

### Conjugate

ABflo® 594. Ex:588nm. Em:604nm.

## Recommended Dilutions

**FC (intra)** 5 µl per 10<sup>6</sup> cells in  
100 µl volume

## Background

Phosphatidylinositol 3-kinase phosphorylates the inositol ring of phosphatidylinositol at the 3-prime position. The enzyme comprises a 110 kD catalytic subunit and a regulatory subunit of either 85, 55, or 50 kD. This gene encodes the 85 kD regulatory subunit.

Phosphatidylinositol 3-kinase plays an important role in the metabolic actions of insulin, and a mutation in this gene has been associated with insulin resistance. Alternative splicing of this gene results in four transcript variants encoding different isoforms. [provided by RefSeq, Jun 2011]

## Immunogen Information

### Gene ID

5295/5296/8503

### Swiss Prot

P27986/O00459/Q92569

### Immunogen

Synthetic peptide. This information is considered to be commercially sensitive.

### Synonyms

PIK3R1/PIK3R2/PIK3R3

## Contact

☎ | 400-999-6126

✉ | [cn.market@abclonal.com.cn](mailto:cn.market@abclonal.com.cn)

🌐 | [www.abclonal.com.cn](http://www.abclonal.com.cn)

## Product Information

### Source

Rabbit

### Isotype

IgG

### Purification

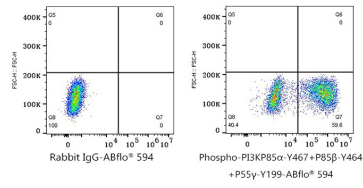
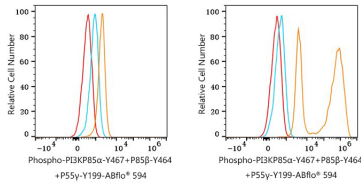
Affinity purification

### Storage

Store at 2-8°C. Avoid freeze.

Buffer: PBS containing 0.2% BSA, preserved with proclin300 or sodium azide (as specified on the Certificate of Analysis), pH 7.3.

## Validation Data



Flow cytometry: 1X10<sup>6</sup> 293T cells (negative control, left) and 293T (Transfection, right) cells were intracellularly-stained with ABflo® 594 Rabbit anti-Human Phospho-PI3KP85 $\alpha$ -Y467+P85 $\beta$ -Y464+P55 $\gamma$ -Y199 mAb (AP1489, 5  $\mu$ l/Test, orange line) or ABflo® 594 Rabbit IgG isotype control (A23821, 5  $\mu$ l/Test, blue line). Non-fluorescently stained cells were used as blank control (red line).

Flow cytometry: 1X10<sup>6</sup> 293T (Transfection) cells were intracellularly-stained with ABflo® 594 Rabbit IgG isotype control (A23821, 5  $\mu$ l/Test, left) or ABflo® 594 Rabbit anti-Human Phospho-PI3KP85 $\alpha$ -Y467+P85 $\beta$ -Y464+P55 $\gamma$ -Y199 mAb (AP1489, 5  $\mu$ l/Test, right).