

# Phospho-MST1-T183+MST2-T180 Rabbit mAb

Catalog No.: AP1564 **Recombinant**

## Basic Information

### Observed MW

59kDa

### Calculated MW

56kDa

### Category

Primary antibody

### Applications

WB, ELISA

### Cross-Reactivity

Human, Mouse, Rat

### CloneNo number

ARC73857

## Background

This gene encodes a serine/threonine protein kinase activated by proapoptotic molecules indicating the encoded protein functions as a growth suppressor. Cleavage of the protein product by caspase removes the inhibitory C-terminal portion. The N-terminal portion is transported to the nucleus where it homodimerizes to form the active kinase which promotes the condensation of chromatin during apoptosis. Multiple transcript variants encoding different isoforms have been found for this gene.

## Recommended Dilutions

**WB** 1:40000 - 1:80000

**ELISA** Recommended starting concentration is 1 µg/mL. Please optimize the concentration based on your specific assay requirements.

## Immunogen Information

### Gene ID

6788/6789

### Swiss Prot

Q13188/Q13043

### Immunogen

Synthetic peptide. This information is considered to be commercially sensitive.

### Synonyms

KRS1; MST2; KRS2; MST1

## Contact

☎ | 400-999-6126

✉ | [cn.market@abclonal.com.cn](mailto:cn.market@abclonal.com.cn)

🌐 | [www.abclonal.com.cn](http://www.abclonal.com.cn)

## Product Information

### Source

Rabbit

### Isotype

IgG

### Purification

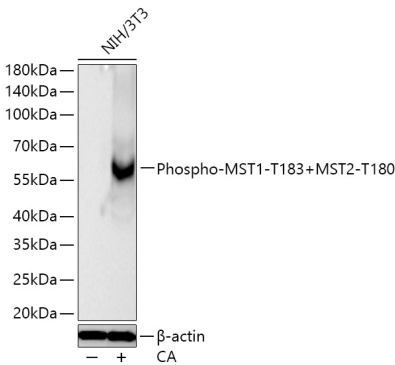
Affinity purification

### Storage

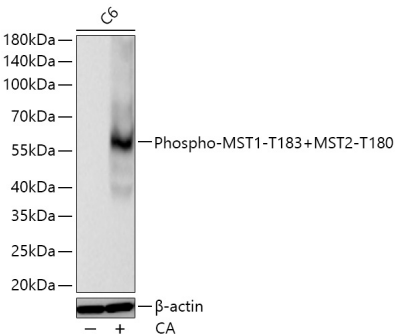
Store at -20°C. Avoid freeze / thaw cycles.

Buffer: PBS with 0.09% Sodium azide, 0.05% BSA, 50% glycerol, pH7.3.

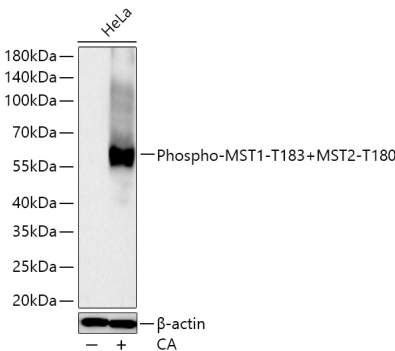
Validation Data



Western blot analysis of lysates from NIH/3T3 cells using Phospho-MST1-T183+MST2-T180 Rabbit mAb (AP1564) at 1:40000 dilution incubated overnight at 4°C. NIH/3T3 cells were treated with Calyculin A (100 nM) at 37°C for 30 minutes.  
Secondary antibody: HRP-conjugated Goat anti-Rabbit IgG (H+L) (AS014) at 1:10000 dilution.  
Lysates/proteins: 30 µg per lane.  
Blocking buffer: 3 % nonfat dry milk in TBST.  
Detection: ECL Basic Kit (RM00020).  
Exposure time: 20s.



Western blot analysis of lysates from C6 cells using Phospho-MST1-T183+MST2-T180 Rabbit mAb (AP1564) at 1:40000 dilution incubated overnight at 4°C. C6 cells were treated with Calyculin A (100 nM) at 37°C for 30 minutes.  
Secondary antibody: HRP-conjugated Goat anti-Rabbit IgG (H+L) (AS014) at 1:10000 dilution.  
Lysates/proteins: 30 µg per lane.  
Blocking buffer: 3 % nonfat dry milk in TBST.  
Detection: ECL Basic Kit (RM00020).  
Exposure time: 20s.



Western blot analysis of lysates from HeLa cells using Phospho-MST1-T183+MST2-T180 Rabbit mAb (AP1564) at 1:40000 dilution incubated overnight at 4°C. HeLa cells were treated with Calyculin A (100 nM) at 37°C for 30 minutes.  
Secondary antibody: HRP-conjugated Goat anti-Rabbit IgG (H+L) (AS014) at 1:10000 dilution.  
Lysates/proteins: 30 µg per lane.  
Blocking buffer: 3 % nonfat dry milk in TBST.  
Detection: ECL Basic Kit (RM00020).  
Exposure time: 45s.