

Rabbit anti-Mouse IL-1 beta mAb

Catalog No.: RMK0018

Basic Information

Catalog No.
RMK0018

Catagory
Elisa Antibody Kit

Application
ELISA

Product Information

Ig Type
Rabbit IgG


Purification
Affinity purification


Endotoxin Level

Storage
Store at -20°C.
Avoid repeated freeze-thaw cycles.

Formulation
Supplied as a 0.2um filtered solution in PBS with 0.05%ProClin 300,PH 7.4.

Contact

 | order@abclonal.com

 | support@abclonal.com

 | www.abclonal.com

Background

The protein encoded by this gene is a member of the interleukin 1 cytokine family. This cytokine is produced by activated macrophages as a proprotein, which is proteolytically processed to its active form by caspase 1. The encoded protein plays a role in thymocyte proliferation and is involved in the inflammatory response.

Immunogen Information

Immunogen
Recombinant Mouse IL-1 beta Protein

Cross-Reactivity

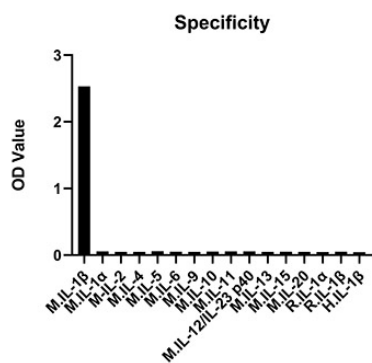
No cross-reactivity in ELISA with recombinant
M.IL-1β □ M.IL-1α □ M-IL-2 □ M.IL-4 □ M.IL-5 □ M.IL-6 □ M.IL-9 □ M.IL-10 □ M.IL-11 □
M.IL-12/IL-23 p40 □ M.IL-13 □ M.IL-15 □ M.IL-20 □ R.IL-1α □ R.IL-1β □ H.IL-1β

Assay Applications

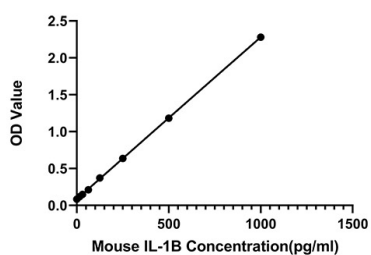
Mouse IL-1 beta Sandwich ELISA

		Recommended Concentration	Sample
ELISA	Capture	1-4ug/mL	Rabbit anti-Mouse IL-1 beta mAb(Cat. No.RMK0017)
	Detection	0.125-0.5ug/mL	Rabbit anti-Mouse IL-1 beta mAb(Cat. No.RMK0018)
	Standard	15.63-1000pg/mL	Recombinant Mouse IL-1 beta Protein

Validation Data



No significant cross-reactivity or interference was observed.



This standard curve is only for demonstration purposes. A standard curve should be generated for each assay.