

# Rabbit anti-Human IL-7 mAb

Catalog No.: RMK0445

## Basic Information

**Catalog No.**  
RMK0445

**Catagory**  
Elisa Antibody Kit

**Application**  
ELISA,Multiplex

## Product Information

**Ig Type**  
Rabbit IgG

**Purification**  
Affinity purification

**Endotoxin Level**

**Storage**  
Store at -20°C.  
**Avoid repeated freeze-thaw cycles.**

**Formulation**  
Supplied as a 0.2um filtered solution in PBS with 0.05%ProClin 300,PH 7.4.

## Contact

 | order@abclonal.com

 | support@abclonal.com

 | www.abclonal.com

## Background

The protein encoded by this gene is a signal transducer shared by many cytokines, including interleukin 6 (IL6), ciliary neurotrophic factor (CNTF), leukemia inhibitory factor (LIF), and oncostatin M (OSM). This protein functions as a part of the cytokine receptor complex. The activation of this protein is dependent upon the binding of cytokines to their receptors. vIL6, a protein related to IL6 and encoded by the Kaposi sarcoma-associated herpesvirus, can bypass the interleukin 6 receptor (IL6R) and directly activate this protein. Knockout studies in mice suggest that this gene plays a critical role in regulating myocyte apoptosis. Alternatively spliced transcript variants have been described. A related pseudogene has been identified on chromosome 17.

## Immunogen Information

**Immunogen**  
Recombinant Human IL-7 Protein

## Cross-Reactivity

/

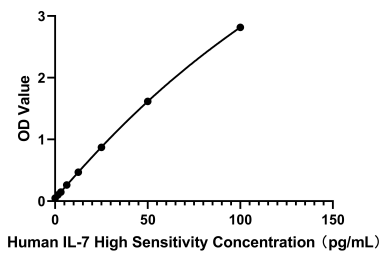
## Assay Applications

Human IL-7 Sandwich Immunoassay

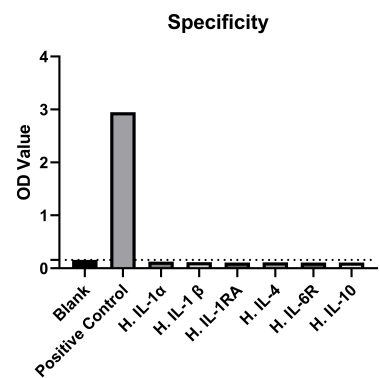
		Recommended Concentration	Sample
ELISA	Capture	2-8ug/mL	Rabbit anti-Human IL-7 mAb(Cat. No.RMK0445)
	Detection	0.0125-0.05ug/mL	Rabbit anti-Human IL-7 mAb(Cat. No.RMK0459)
	Standard	1.56-100pg/mL	Recombinant Human IL-7 Protein

Multiplex	Capture	3-20ug/mL	Rabbit anti-Human IL-7 mAb(Cat. No.RMK0445)
	Detection	0.017-2ug/mL	Rabbit anti-Human IL-7 mAb(Cat. No.RMK0418)
	Standard	6.86-5000pg/mL	Recombinant Human IL-7 Protein

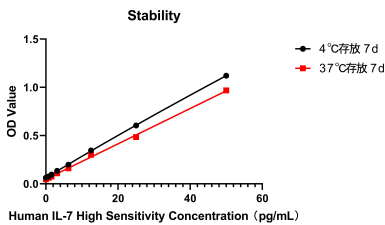
Validation Data



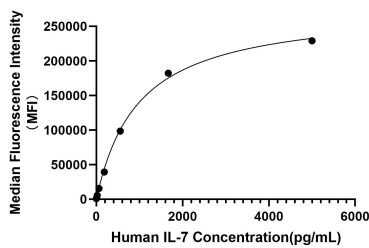
This standard curve is only for demonstration purposes. A standard curve should be generated for each assay.



No significant cross-reactivity or interference was observed.



Placed at 37°C for 7 days, the stability of the standard curve all conform to CV <10%.



This standard curve is only for demonstration purposes. A standard curve should be generated for each assay.