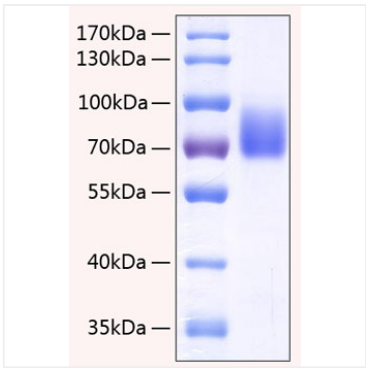
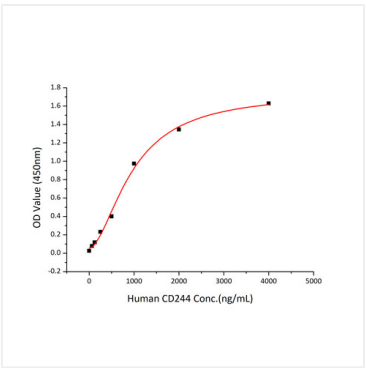




Validation Data



Recombinant Human SLAMF4/2B4/CD244 Protein was determined by SDS-PAGE under reducing conditions with Coomassie Blue.



Immobilized recombinant human CD48 at 5  $\mu$ g/mL (100  $\mu$ L/well) can bind recombinant human CD244 with a linear range of 0.2-1  $\mu$ g/mL.