

Catalog No.: RP01029 **Recombinant**

Species	Gene ID	Swiss Prot
Human	1956	P00533

EGFR; ERBB; ERBB1; HER1; NISBD2;
PIG61; mENA; epidermal growth factor
receptor;ERBB;ERBB1;HER1;NISBD2;PIG6
1;mENA

Source	Purification
HEK293 cells	≥ 90 % as determined by SDS-PAGE

Calculated MW	Observed MW
97.64 kDa	125-145 kDa

< 0.1 EU/μg of the protein by LAL method.

Lyophilized from a 0.22 μ m filtered solution of PBS, pH 7.4. Contact us for customized product form or formulation.

Centrifuge the vial before opening. Reconstitute to a concentration of 0.1-0.5 mg/mL in sterile distilled water. Avoid vortex or vigorously pipetting the protein. For long term storage, it is recommended to add a carrier protein or stabilizer (e.g. 0.1% BSA, 5% HSA, 10% FBS or 5% Trehalose), and aliquot the reconstituted protein solution to minimize free-thaw cycles.

The EGFR (epidermal growth factor receptor) subfamily of receptor tyrosine kinases comprises four members: EGFR (also known as HER-1, ErbB1, or ErbB), ErbB2 (Neu, HER-2), ErbB3 (HER-3), and ErbB4 (HER-4). EGFR protein is type I transmembrane glycoprotein that binds a subset of EGF family ligands including EGF, amphiregulin, TGF- α , betacellulin, etc. The human EGFR cDNA encodes a 1210 amino acid (aa) precursor with a 24 aa signal peptide, a 621 aa extracellular domain (ECD), a 23 aa transmembrane segment, and a 542 aa cytoplasmic domain. EGFR signaling has been shown to exert action on carcinogenesis and disease progression, and thus EGFR protein is proposed as a target for cancer therapy currently, which is overexpressed in a wide variety of tumors and is the target of several anti-cancer drugs.

Recombinant Human HER1/ERBB1/EGFR Protein is produced by HEK293 cells expression system. The target protein is expressed with sequence (Met1-Ser645) of human EGFR (Accession #NP_005219.2.) fused with an Fc, 6xHis tag at the C-terminus.

Measured by its binding ability in a functional ELISA. Immobilized recombinant human EGF at 0.5 µg/mL (100 µL/well) can bind Rrecombinant human EGFR with a linear range of 0.3-2.5 µg/mL.

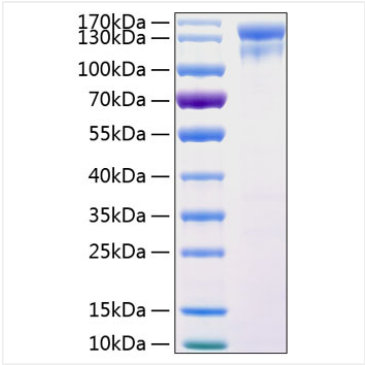
Store at -20°C. Store the lyophilized protein at -20°C to -80 °C up to 1 year from the date of receipt.
After reconstitution, the protein solution is stable at -20°C for 3 months, at 2-8°C for up to 1 week.
Avoid repeated freeze/thaw cycles.

 | 400-999-6126

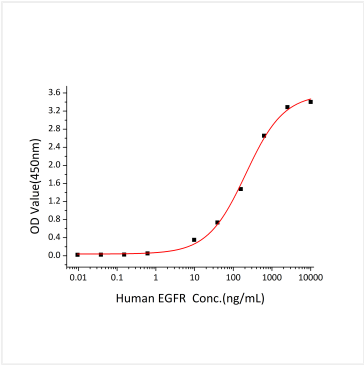
 | cn.market@abclonal.com.cn

 | www.abclonal.com.cn

Validation Data



Recombinant Human HER1/ERBB1/EGFR Protein was determined by SDS-PAGE under reducing conditions with Coomassie Blue.



Immobilized Human EGF (Catalog: RP01556) at 10 µg/mL (100 µL/well) can bind Human EGFR(Catalog: RP01029) with a linear range of 0.6-209.9 ng/mL.