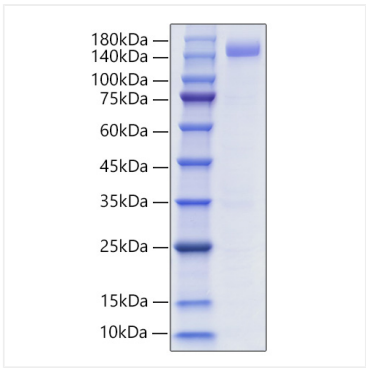
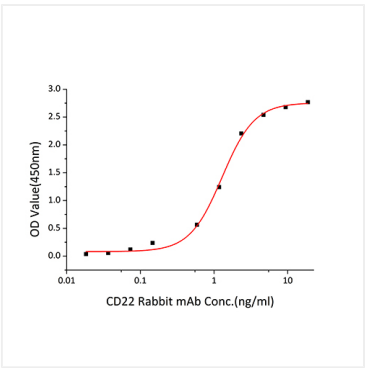




Validation Data



Recombinant Human Siglec-2/CD22 Protein was determined by SDS-PAGE under reducing conditions with Coomassie Blue.



Immobilized Human CD22 (Catalog: RP01199) at 0.5 µg/mL (100 µL/well) can bind anti CD22 Rabbit mAb with a linear range of 0.01-1.28ng/mL.