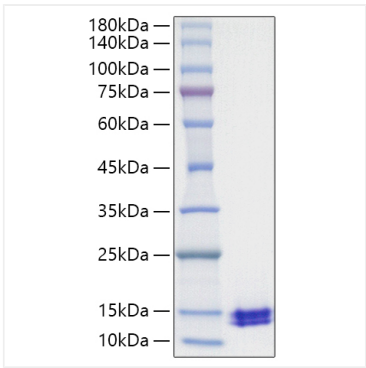


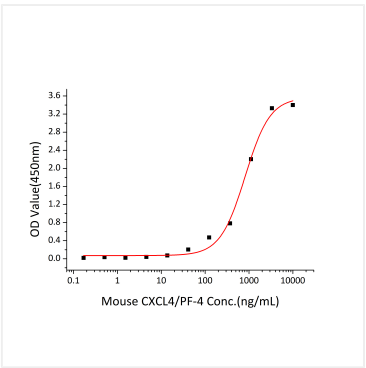
**Catalog No.: RP01611LQ** **Recombinant**

\* □□□□□□□□□□□□□□□□□□□□□□□□

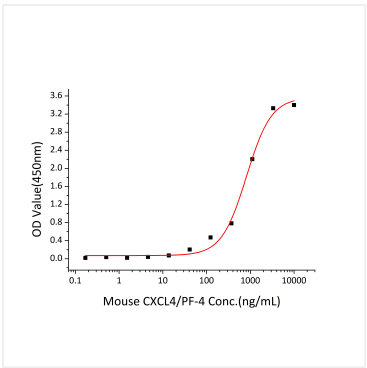
# Validation Data



Recombinant Human CCL5/RANTES Protein was determined by SDS-PAGE under reducing conditions with Coomassie Blue.



Measured by its binding ability in a functional ELISA. Immobilized Human CCL5 (Catalog: RP01611LQ) at 2 µg/mL (100 µL/well) can bind Mouse CXCL4(Catalog: RP03170) with a linear range of 41.2-815 ng/mL.



Immobilized Human CCL5 (Catalog: RP01611LQ) at 2 µg/mL (100 µL/well) can bind Mouse CXCL4(Catalog: RP03170) with a linear range of 41.2-815 ng/mL.