

Recombinant Human GDF15 Protein

Catalog No.: RP01950 **Recombinant**

Sequence Information

Species	Gene ID	Swiss Prot
Human	9518	Q99988

Tags

N-hFc

Synonyms

GDF15; MIC1; PDF; PLAB; PTGFB;
Growth/differentiation factor 15; GDF-15;
Macrophage inhibitory cytokine 1; MIC-1;
NSAID-activated gene 1 protein; NAG-1;
NSAID-regulated gene 1 protein; NRG-1;
Placental TGF-beta; Placental bone
morphogenetic protein; Prost

Product Information

Source	Purification
HEK293 cells	≥ 90 % as determined by SDS- PAGE.

Calculated MW	Observed MW
38.18 kDa	45 kDa

Endotoxin

< 1 EU/μg of the protein by LAL method.

Formulation

Lyophilized from a 0.22 μm filtered
solution of PBS, pH 7.4.

Reconstitution

Centrifuge the vial before opening.
Reconstitute to a concentration of
0.1-0.5 mg/mL in sterile distilled water.
Avoid vortex or vigorously pipetting the
protein. For long term storage, it is
recommended to add a carrier protein or
stabilizer (e.g. 0.1% BSA, 5% HSA, 10%
FBS or 5% Trehalose), and aliquot the
reconstituted protein solution to
minimize free-thaw cycles.

Background

Growth-differentiation factor 15 (GDF15), also known as MIC-1, is a secreted member of the transforming growth factor (TGF)-β superfamily, as a novel antihypertrophic regulatory factor in the heart. GDF-15 / GDF15 is not expressed in the normal adult heart but is induced in response to conditions that promote hypertrophy and dilated cardiomyopathy and it is expressed highly in liver. GDF-15 / GDF15 has a role in regulating inflammatory and apoptotic pathways in injured tissues and during disease processes. GDF-15 / GDF15 is synthesized as precursor molecules that are processed at a dibasic cleavage site to release C-terminal domains containing a characteristic motif of 7 conserved cysteines in the mature protein. GDF-15 / GDF15 overexpression arising from an expanded erythroid compartment contributes to iron overload in thalassemia syndromes by inhibiting hepcidin expression.

Basic Information

Description

Recombinant Human GDF15 Protein is produced by HEK293 cells expression system. The target protein is expressed with sequence (Ala197-Ile308) of Human GDF15 (Accession #NP_004855.2) fused with a hFc tag at the N-terminus.

Bio-Activity

Storage

Store at -20°C. Store the lyophilized protein at -20°C to -80°C up to 1 year from the date of receipt.

After reconstitution, the protein solution is stable at -20°C for 3 months, at 2-8°C for up to 1 week.

Avoid repeated freeze/thaw cycles.

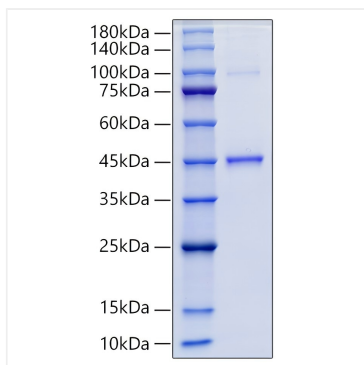
Contact

☎ | 400-999-6126

✉ | cn.market@abclonal.com.cn



Validation Data



Recombinant Human GDF15 Protein was determined by SDS-PAGE under reducing conditions with Coomassie Blue.