

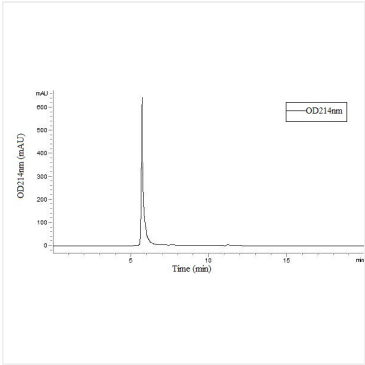
* □□□□□□□□□□□□□□□□□□□□□□□□

Store at -20°C. Store the lyophilized protein at -20°C to -80 °C up to 1 year from the date of receipt.

After reconstitution, the protein solution is stable at -20°C for 3 months, at 2-8°C for up to 1 week.

Avoid repeated freeze/thaw cycles.

Validation Data



Recombinant Human Insulin
Receptor/INSR/CD220 Protein is greater than
95% as determined by SEC-HPLC.