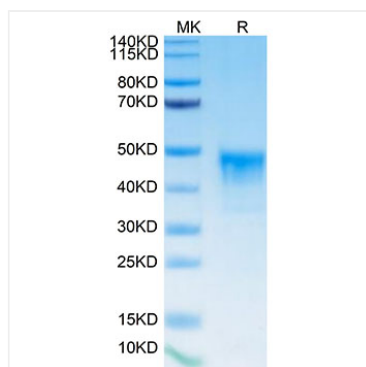
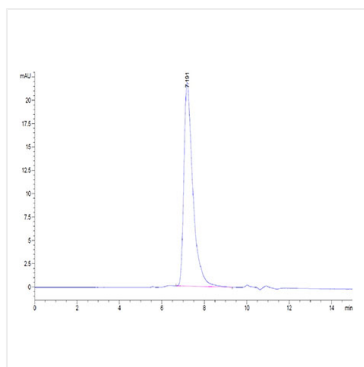


\* □□□□□□□□□□□□□□□□□□□□□□□□□□□□

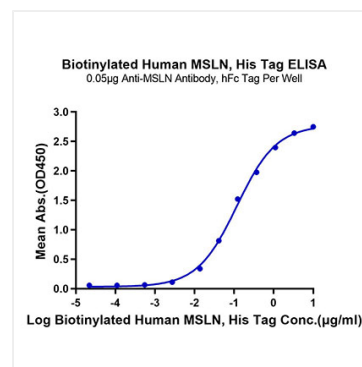
## Validation Data



Biotinylated Recombinant Human Mesothelin/MSLN Protein was determined by Tris-Bis PAGE under reducing conditions with Coomassie Blue.



The purity of Biotinylated Human MSLN was greater than 95% as determined by SEC-HPLC.



Immobilized Anti-MSLN Antibody at 0.5µg/ml (100µl/well) on the plate. Dose response curve for Biotinylated Human MSLN, His Tag with the  $EC_{50}$  of 0.12µg/ml determined by ELISA.