

Catalog No.: RP02460 **Recombinant**

Species	Gene ID	Swiss Prot
Human	4851	P46531

C-His&Avi

Synonyms
AOS5;AOVD1;TAN1;hN1;NOTCH1;Activated NOTCH1;notch 1; AOS5; AOVD1; TAN1; hN1; notch 1

Source HEK293 cells	Purification ≥ 95 % as determined by Tris- Bis PAGE; ≥ 95 % as determined by HPLC.
-------------------------------	--

56.5 kDa 70-80 kDa

< 1 EU/μg of the protein by LAL method.

Lyophilized from a 0.22 μm filtered solution of PBS, pH 7.4.

Centrifuge the tube before opening. Reconstitute to a concentration of 0.1-0.5 mg/mL in sterile distilled water. Avoid vortex or vigorously pipetting the protein. For long term storage, it is recommended to add a carrier protein or stabilizer (e.g. 0.1% BSA, 5% HSA, 10% FBS or 5% Trehalose), and aliquot the reconstituted protein solution to minimize freeze-thaw cycles.

 | 400-999-6126

 | cn.market@abclonal.com.cn

 | www.abclonal.com.cn

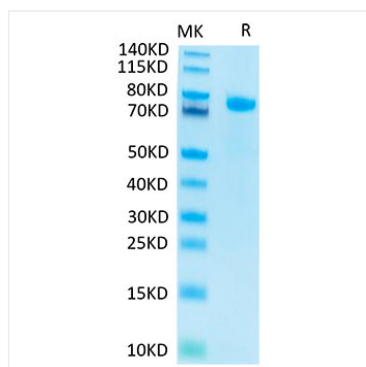
Description: Recombinant Human Notch 1 Protein is produced by Expi293 expression system. The target protein is expressed with sequence (Ala19-Gln526) of Human Notch 1 fused with His tag and Avi tag at the C-terminal.

Store at -20°C. Store the lyophilized protein at -20°C to -80 °C up to 1 year from the date of receipt.

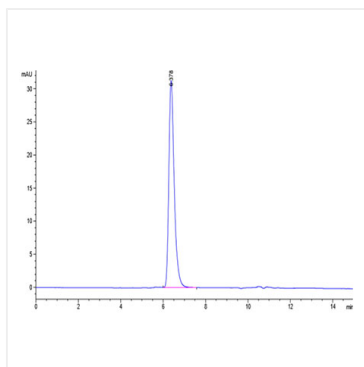
After reconstitution, the protein solution is stable at -20°C for 3 months, at 2-8°C for up to 1 week.

Avoid repeated freeze/thaw cycles.

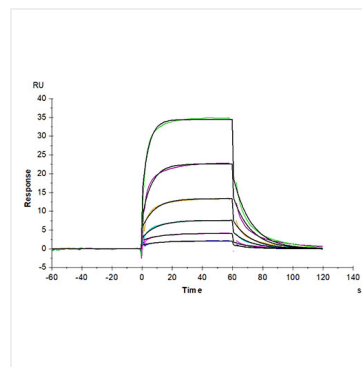
Validation Data



Recombinant Human Notch 1 Protein was determined by Tris-Bis PAGE under reducing conditions.



The purity of Human Notch 1 is greater than 95% as determined by SEC-HPLC.



Human DLL4, hFc Tag captured on CM5 Chip via Protein A can bind Human Notch 1, His Tag with an affinity constant of $0.48 \mu\text{M}$ as determined in SPR assay (Biacore T200).