

Catalog No.: RP02705 **Recombinant**

Species	Gene ID	Swiss Prot
Human	131578	O8TF66-1

C-His&Avi

LIB: LRRC15

Source HEK293 cells	Purification ≥ 95 % as determined by Tris- Bis PAGE; ≥ 95 % as determined by HPLC.
-------------------------------	--

60.7 kDa 70-80 kDa


< 1 EU/μg of the protein by LAL method.

Reconstitution

Centrifuge the tube before opening. Reconstitute to a concentration of 0.1-0.5 mg/mL in sterile distilled water. Avoid vortex or vigorously pipetting the protein. For long term storage, it is recommended to add a carrier protein or stabilizer (e.g. 0.1% BSA, 5% HSA, 10% FBS or 5% Trehalose), and aliquot the reconstituted protein solution to minimize free-thaw cycles.

 | 400-999-6126

 | cn.market@abclonal.com.cn

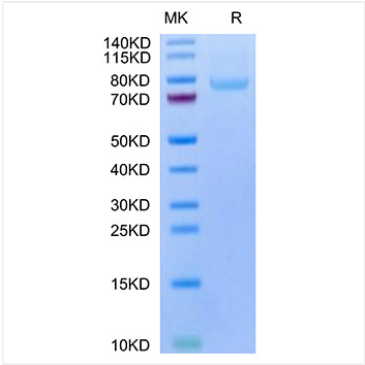
 | www.abclonal.com.cn

The chimeric protein binds *in vitro* and *in vivo* to a specific element upstream of LRRC15, leading to dramatic transcriptional activation. LRRC15 encodes a leucine-rich transmembrane protein, present at the leading edge of migrating cells, the expression of which in normal tissues is restricted to the invasive cytotrophoblast layer of the placenta; small interfering (siRNA)-mediated suppression of LRRC15 expression in breast cancer cells leads to abrogation of invasiveness *in vitro*.

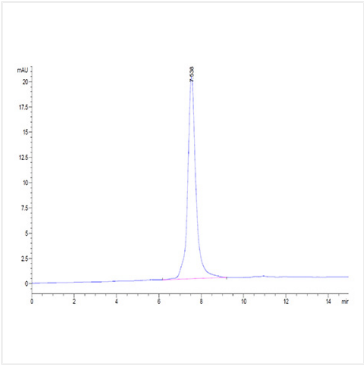
Recombinant Human LRRC15/LIB Protein is expressed from Expi293 with His tag and Avi tag at the C-terminal. It contains Tyr22-Gly538.

Store at -20°C. Store the lyophilized protein at -20°C to -80 °C up to 1 year from the date of receipt.
After reconstitution, the protein solution is stable at -20°C for 3 months, at 2-8°C for up to 1 week.
Avoid repeated freeze/thaw cycles.

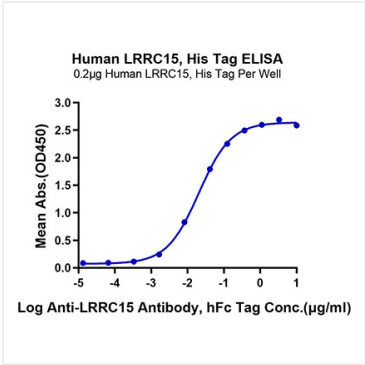
Validation Data



Recombinant Human LRRC15/LIB Protein was determined by Tris-Bis PAGE under reducing conditions.



The purity of Human LRRC15 is greater than 95% as determined by SEC-HPLC.



Immobilized Human LRRC15, His Tag at 2µg/ml (100µl/Well) on the plate. Dose response curve for Anti-LRRC15 Antibody, hFc Tag with the EC₅₀ of 20.4ng/ml determined by ELISA.