

**Catalog No.: RP03194** **Recombinant**

Species	Gene ID	Swiss Prot
Human	51056	P28838

## Tags

## Synonyms

HEL-S-106; LAP; LAPEP; PEPS; LAP3

<b>Source</b>	<b>Purification</b>
HEK293 cells	≥ 90 % as determined by SDS-PAGE

Calculated MW	Observed MW
57.6 kDa	50-60 kDa

## Endotoxin

< 1 EU/μg of the protein by LAL method.

## Formulation

Lyophilized from sterile 20 mM Tris, 500 mM NaCl, 20 % glycerol, pH 7.4.

## Reconstitution

Centrifuge the vial before opening. Reconstitute to a concentration of 0.1-0.5 mg/mL in sterile distilled water. Avoid vortex or vigorously pipetting the protein. For long term storage, it is recommended to add a carrier protein or stabilizer (e.g. 0.1% BSA, 5% HSA, 10% FBS or 5% Trehalose), and aliquot the reconstituted protein solution to minimize free-thaw cycles.

LAP3 (Leucine Aminopeptidase 3) is a Protein Coding gene. 2 alternative initiation human isoforms have been reported. LAP3, belonging to the peptidase M17 family, has been proved to catalyze the hydrolysis of leucine residues. It catalyzes the removal of unsubstituted N-terminal amino acids from various peptides and is presumably involved in the processing and regular turnover of intracellular proteins. Leucine aminopeptidases are involved in many pathological disorders and regulate cell proliferation, invasion, and/or angiogenesis of tumors. A recent study showed that LAP3 is highly expressed in several malignant and affects tumor angiogenesis. LAP3 is widely expressed in the appendix, lymph node, and other tissues. Diseases associated with LAP3 include Bacterial Vaginosis and Trichomoniasis.

### Description

Recombinant Human LAP3 Protein is produced by HEK293 cells expression system. The target protein is expressed with sequence (Met1-Ala519) of human LAP3 (Accession #NP\_056991.2) fused with a His tag at the C-terminus.

## Bio-Activity


## Storage

Store at -20°C. Store the lyophilized protein at -20°C to -80 °C up to 1 year from the date of receipt.  
After reconstitution, the protein solution is stable at -20°C for 3 months, at 2-8°C for up to 1 week.  
Avoid repeated freeze/thaw cycles.

## Contact

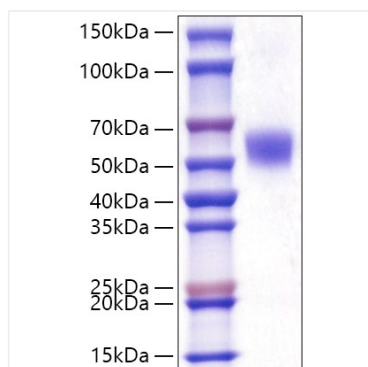
 | 400-999-6126

 | [cn.market@abclonal.com.cn](mailto:cn.market@abclonal.com.cn)

 | [www.abclonal.com.cn](http://www.abclonal.com.cn)

## Validation Data

---



Recombinant Human LAP3 Protein was determined by SDS-PAGE under reducing conditions with Coomassie Blue.