

Recombinant Human MetAP1 Protein

Catalog No.: RP03202LQ **Recombinant**

Sequence Information

Species	Gene ID	Swiss Prot
Human	23173	P53582

Tags

No tag

Synonyms

Methionine aminopeptidase 1; MAP 1;
MetAP 1; Peptidase M 1; METAP1

Product Information

Source	Purification
E.coli	≥ 95 % as determined by SDS- PAGE.

Calculated MW	Observed MW
43.2 kDa	40-50 kDa

Endotoxin

< 1 EU/μg of the protein by LAL method.

Formulation

Supplied as a 0.2 μm filtered solution of
20 mM Tris-HCl, 500 mM NaCl, 10%
Glycerol, pH 8.0.

Reconstitution

Background

Methionine Aminopeptidase 1 is a member of the M24 family of metalloproteases. METAP1 plays an important role in G(2)/M phase regulation of the cell cycle and may serve as a promising target for the discovery and development of new anticancer agents. METAP1 and METAP2 have different substrate specificity due to the differences in both size and shape of the active sites. The proteolytic removal of N-terminal methionine from nascent peptides is catalyzed by a family of enzymes known as methionine aminopeptidases (MetAPs) and is essential for cell growth. Inhibition of METAPs provides a novel strategy in developing anti-cancer drugs.

Basic Information

Description

Recombinant Human MetAP1 Protein is produced by E.coli expression system. The target protein is expressed with sequence (Met1-Phe386) of human MetAP1 (Accession #P53582) fused with No tag.

Bio-Activity

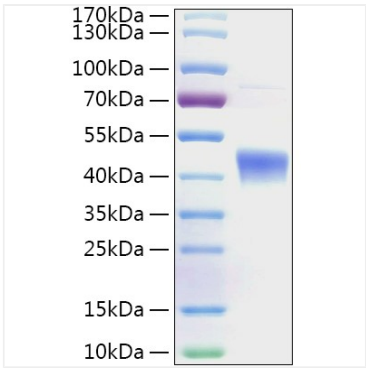
Storage

Store at -70°C. This product is stable at ≤ -70°C for up to 1 year from the date of receipt. For optimal storage, aliquot into smaller quantities after centrifugation and store at recommended temperature. Avoid repeated freeze-thaw cycles.
Avoid repeated freeze/thaw cycles.

Contact

 | 400-999-6126 | cn.market@abclonal.com.cn | www.abclonal.com.cn

Validation Data



Recombinant Human MetAP1 Protein was determined by SDS-PAGE under reducing conditions with Coomassie Blue.